



CITY OF  
MONASH

Noodle Bar

Bakery

SHOP

UNIVERSITY

LIBRARY

Coffee  
Shop



IMAGINE  
MONASH IN 2040  
DRAFT  
**COMMUNITY  
VISION**

September 2021

# Table of CONTENTS

Context.....	3
Our Vision .....	3
The six Themes.....	4
A Sustainable Future .....	5
A Green and Leafy City .....	6
Easy to Get Around .....	8
Services in My Neighbourhood.....	9
A Strong Sense of Community.....	10
An Engaged Community .....	11

## Acknowledgement OF COUNTRY

Monash City Council acknowledges the Traditional Custodians of the land, now known as Monash and pays respect to their Elders past, present and emerging.



## CONTEXT

The Community Vision is largely the product of a community engagement exercise undertaken between March and June 2021. Where possible the words are those of community members who participated and, where not, the content is sympathetic to the passion and consideration the community brought to the discussion.

Structurally, the Community Vision comprises a Vision Statement, six themes and associated principles. The Vision Statement and principles were drafted and revised by the Imagine Monash Panel.

The themes emerged from the early consultation which comprised a survey completed online or as part of a broader annual Community Satisfaction Survey, engagement with Monash's seven Advisory Committees and the contributions of 30 residents over six weeks through deliberative engagement - the Imagine Monash Panel. The Advisory Committees and Imagine Monash Panel had the opportunity to hear what the community said through the surveys and build upon those contributions.

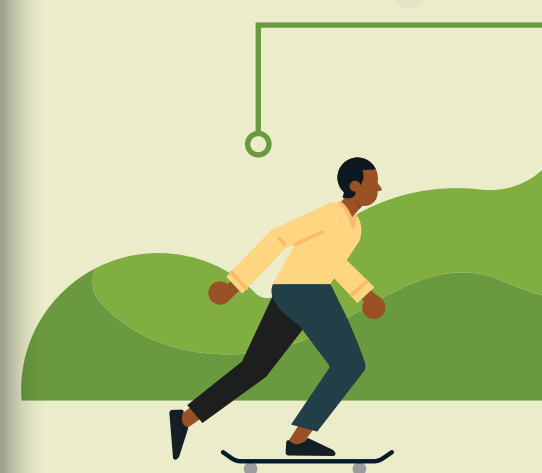
Many of these themes cross over with other themes and are noted under the section Connection to other themes.

## Our VISION

**MONASH IS THE MOST LIVEABLE CITY IN VICTORIA.**

**Monash is a city that gives more than it takes. It:**

- Shares its surplus
- Thrives through its rich diversity
- Empowers its community to live healthy, connected lives
- Nurtures innovation and prioritises sustainability, and
- Is a liveable place where we all belong.





# The six THEMES

**A SUSTAINABLE FUTURE**

**A STRONG SENSE OF COMMUNITY**

**A GREEN AND LEAFY CITY**

**AN ENGAGED COMMUNITY**

**EASY TO GET AROUND**

**SERVICES IN MY NEIGHBOURHOOD**



## A Sustainable Future

**Achieving a sustainable future is very important to the Monash community. Sustainability applies in a range of ways, including:**

- Addressing climate change, reducing greenhouse gases, and the heat-island effect
- Improving building design such as houses
- Increasing or improving transport options such as public transport, cycling and walking paths
- Improving biodiversity and reducing pollution, and
- Reducing and recycling waste.

### Our community said:

"Planning for environmentally friendly housing. More green spaces, more trees, more electric cars more solar panelling, ensuring residents maintain their properties."

"Council access energy from only renewable energy. Council provides initiatives and support for residential to "reach zero emissions". Council encourages residents to plant trees and encourages them take care of parks. Many Monash parks have no/limited vegetation."

"All citizens can participate in sustainability programs that the Council provides that lead to better recycling, composting, and energy usage. Community farms and gardens are easy to join. These changes happen at the business level too."

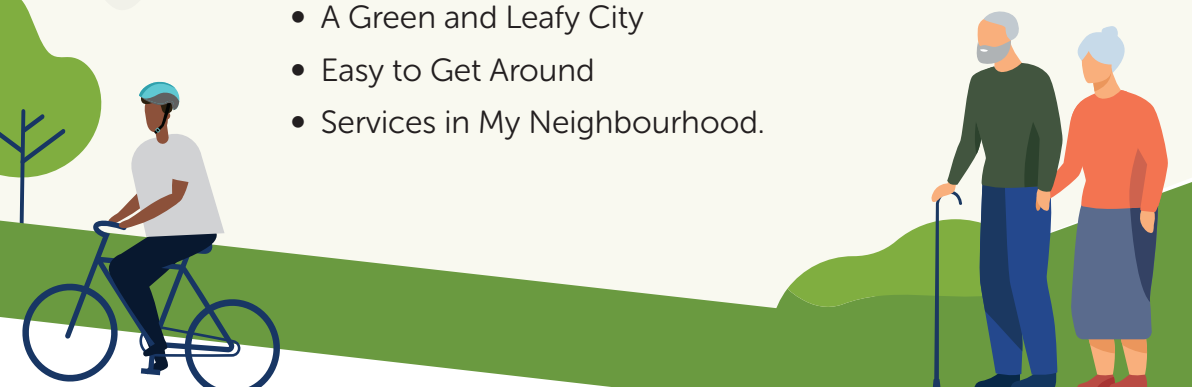
"Well designed and integrated developments with strong emphasis on sustainability (less energy use, less waste generation) and biodiversity (green roofs, green walls, native planting)."

### Principles

- Focus on being a thought leader in sustainability and environmental concerns, technology (e.g. blockchain and microgrids), and urban planning. Don't be afraid to set ambitious targets. Benchmark and learn from other councils to adopt best practice
- Council should prioritise environmentally responsible sustainable outcomes and projects for example, resilience, local production, energy; and respond to climate change impacts.

### Connection to other themes

- A Green and Leafy City
- Easy to Get Around
- Services in My Neighbourhood.





# A Green and Leafy City

Overwhelmingly our tree lined streets, parks, bushland, or even private gardens are considered the 'heart' of Monash. Our trees and parkland are valued for their aesthetic and wellbeing benefits, as well as places to walk and ride, or meet with friends and family.

Our natural environment was also seen as a buffer to, and threatened by, the continued development across our city.

## Our community said:

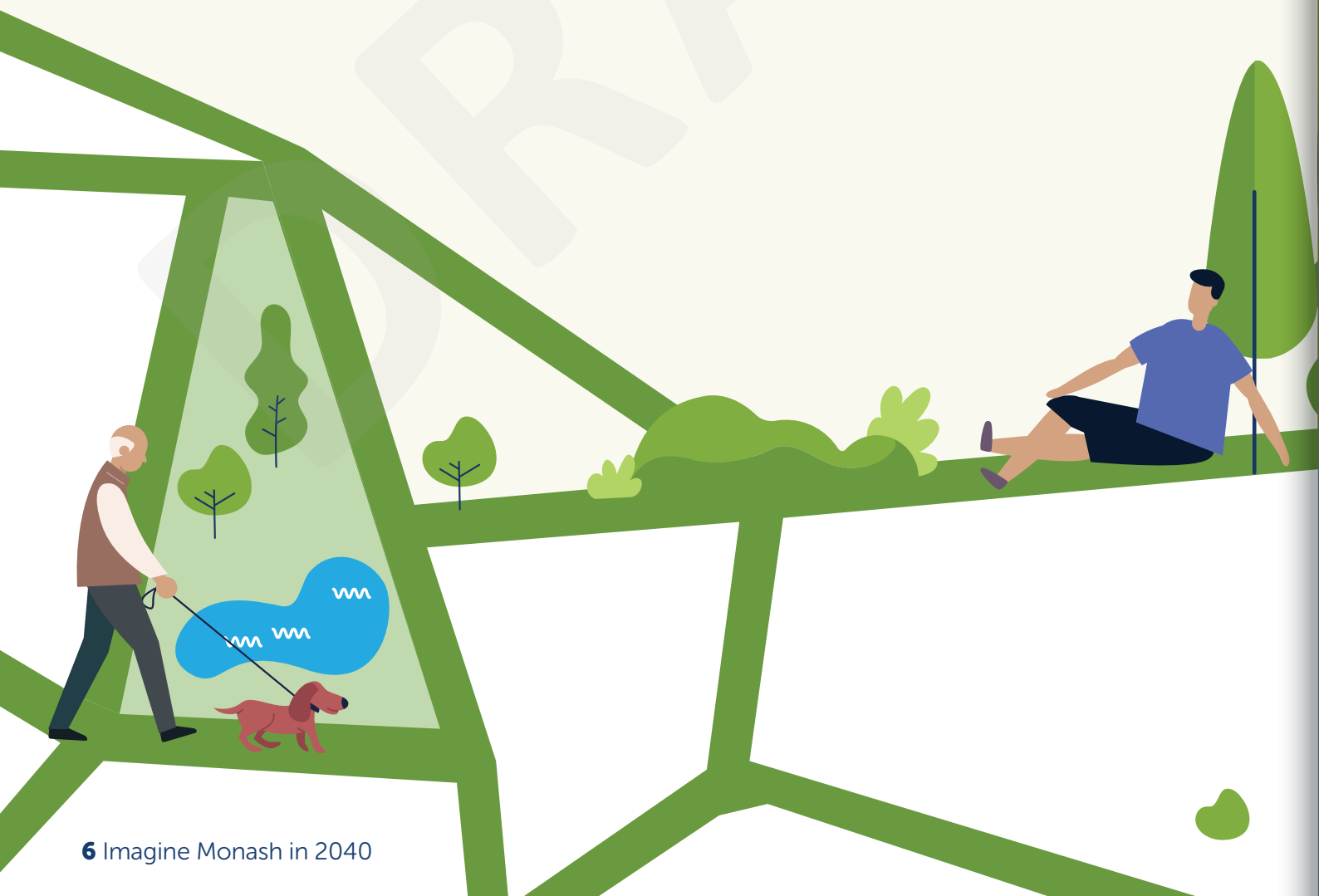
"I value the parks and trees of Monash. As the suburbs become more dense these shared public spaces become more important for community health and wellbeing."

"Green, leafy suburb; parks and open spaces."

"Stop allowing the building of big houses with no off street parking and no vegetation."

"Avoid over development and crowding and include plenty of green areas and resources needed in the community."

"Whether for or against apartments there was a great agreement amongst those I spoke to for Council responsibility to ensure the right infrastructure supports the increased population - especially transport."



## Principles

- When making planning decisions, Council considers and protects against the long-term social impacts of development and population growth on the local area ((communities, people who live in and/or use the area).

## Connection to other themes

- A Sustainable Future.



# Easy to Get Around

Monash is well located, in close proximity to Melbourne's CBD, the country and sea. Our walking and cycling path network is valued and people are keen for these bike and pedestrian paths to be expanded, and public transport to be improved, as a way of travelling around locally.



## Our community said:

"Easy and quiet suburb to live in but close to services and easy access to the rest of Melbourne."

"Its proximity between city and country - access to things that are not immediately found in Monash."

"The City of Monash is central to everything and just a short train ride to the city. Great Schools, university, playing fields, golf courses, tennis courts, walking tracks, arts and other cultural facilities and easy to jump on the freeway to the country or beach."

"Better, safer, and more efficient public transport network. Better, safer, and more accessible cycle path network. More renewable energy, and EV charging stations."

"Better pedestrian, cyclist and public transport facilities leading to less reliance on cars. Design orientated around people not cars."

## Principles

- Council should plan for publicly accessible, active and sustainable transport within local communities.

## Connection to other themes

- Services in My Neighbourhood
- A Sustainable Future.

# Services in My Neighbourhood

Our community values the wide range of quality services and places available locally, such as schools, shops, dining, health care, all levels of education, jobs, parks, libraries or sports facilities.

## Our community said:

"The availability of services so close to one's door - trains, medical services, good schools, shopping centres."

"I love the ability to work, live and play within the same area! I love the local sporting clubs and not for profit organisations, and the partnership between many of these."

"Many businesses, well-educated community, plenty of sporting facilities and libraries, presence of Monash University, what Council is doing for outdoor dining post-COVID."

"As a resident of Oakleigh I enjoy that we are a cosmopolitan community with access to excellent community services, facilities and shopping."

"I love that a range of services are all within walking distance of my home. These services are social, educational, sporting, recreational and commercial."

## Principles

- Prioritise assets which support community relationships, promote regeneration, are convenient, and are accessible, for example a range of local urban green spaces and multi-use facilities such as libraries
- Focus on working with neighbouring councils on joint initiatives, build a broader sense of community, consider cost-benefits, leverage and combine other Councils' services to assist people on the edge of Monash. Consider the risk of centralising Council services.

## Connection to other themes

- Easy to Get Around.



# A Strong Sense of Community

Monash is proud of its diverse and friendly community, with people from a range of backgrounds – such as age, cultural, gender identity or abilities – living, socialising and working in our City. For many it is important to know their neighbours, or to feel a strong connection to your local community.

## Our community said:

"Multiculturalism. I am very comfortable because everyone in Monash city is very kind and respect for the individual."

"Sense of community. I know my neighbours, I can shop at local stores."

"Community feel and connectedness."

"A safe, healthy and connected community which values the environment, diversity, equality, education and local businesses. A place for children to grow up and thrive where as a community we are working to ensure a sustainable future."

## Principles

- When making decisions, be transparent, inclusive, democratic, equitable and reflective of the community's diversity (e.g. age, gender, sexuality, income level, language and ethnicity) ensuring decentralised and wide distribution of decision making amongst the Monash community.

## Connection to other themes

- An Engaged Community.

# An Engaged Community

Involvement in the local community, as well as transparency and equity in decision making, are important to the Monash community. The financial sustainability of Council is also valued by the community.

## Our community said:

"forward planning with realistic goals and budget."

"Proper long term planning, accountability and transparency in the decision making process."

"Over time Council has slowly decentralised much decision making power to the community. This was facilitated by the blockchain, to allow for more efficient service delivery and governance."

"Transparent in approach, engaging all members of the community prior to making decisions, be focused on the longer term not just short term gain and \$\$."

"Engage community more actively in decision making. Clarifying the role of local govt so that everyday citizens know what to expect from each level of government and how they have power at a local level."

## Principles

- Council must balance the community's needs, principles of equity, and ensure long-term financial sustainability when making financial and development decisions
- Go beyond requirements and ensure community involvement and communication is transparent, active, innovative, accessible for all people, and closes the loop on delivery of plans (e.g. contact person in Monash Bulletin, digitisation, consider audience needs).

## Connection to other themes

- A Strong Sense of Community.





Monash Civic Centre | 293 Springvale Road, Glen Waverley, 3150 | 8.30am to 5.15pm | Monday to Friday  
Oakleigh Service Centre | 3 Atherton Road, Oakleigh, 3166 | 8.30am to 5.15pm | Monday to Friday  
9518 3555 | [www.monash.vic.gov.au](http://www.monash.vic.gov.au) | [mail@monash.vic.gov.au](mailto:mail@monash.vic.gov.au)  
National Relay Service (for people with hearing or speech impairments) 1800 555 660

#### Language Assist

普通话	9321 5485	Ελληνικά	9321 5482	廣東話	9321 5481	සිංහල	7005 3002	Italiano	9321 5483
हिंदी	7005 3000	Việt Ngữ	9321 5487	தமிழ்	7005 3003	한국어	9321 5484	Bahasa Indonesia	7005 3001

