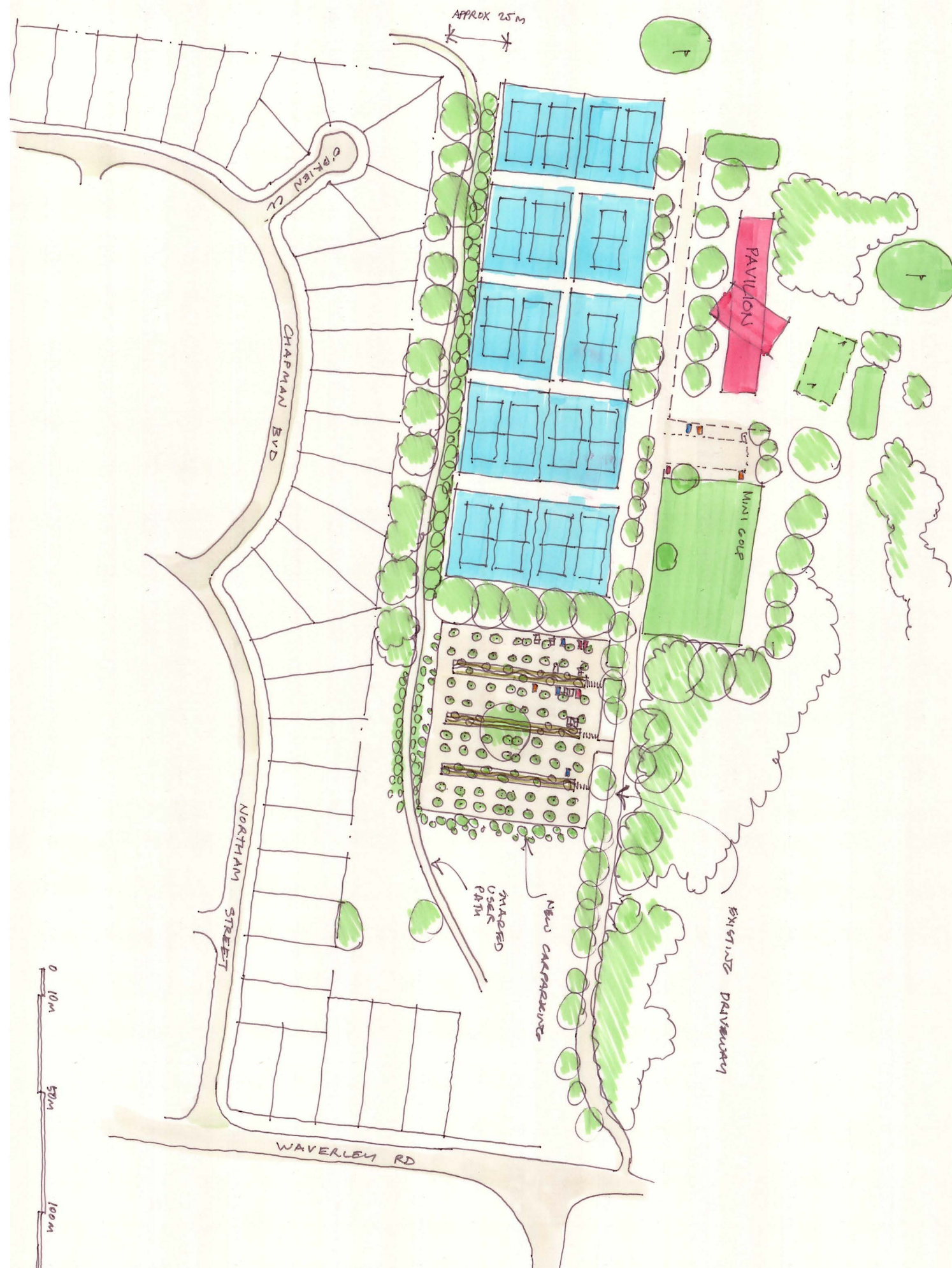




LAYOUT 01

DRIVING RANGE

25m BUFFER



SCALE
NTS

PROJECT
GLEN WAVERLEY SPORTS HUB

REV
A

DATE
19.02.2021

PAGE
2



LAYOUT 02

DRIVING RANGE

35m BUFFER



SCALE
NTS

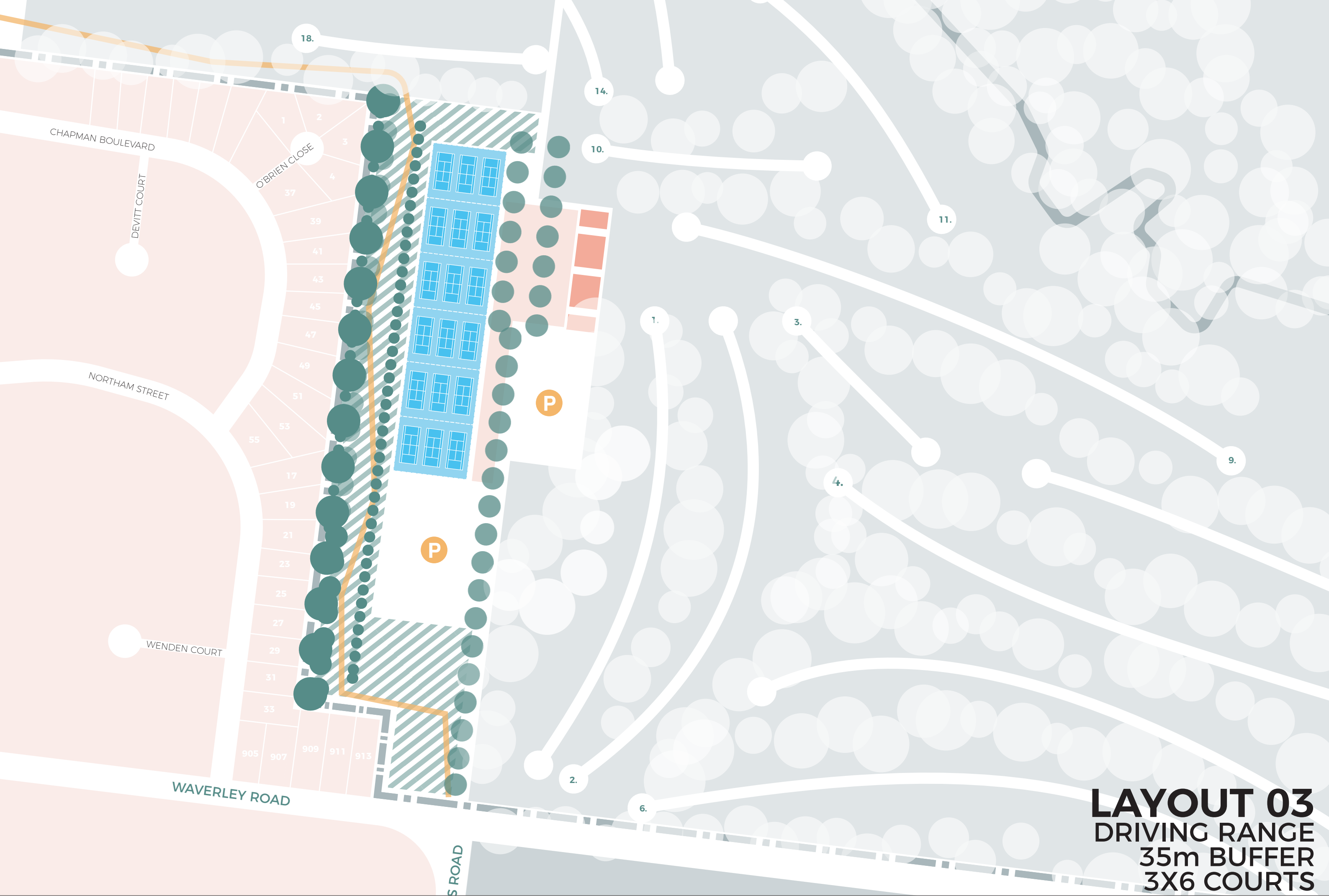
PROJECT
GLEN WAVERLEY SPORTS HUB

REV
A

DATE
19.02.2021

PAGE
3





LAYOUT 03

DRIVING RANGE
35m BUFFER
3X6 COURTS



SCALE
NTS

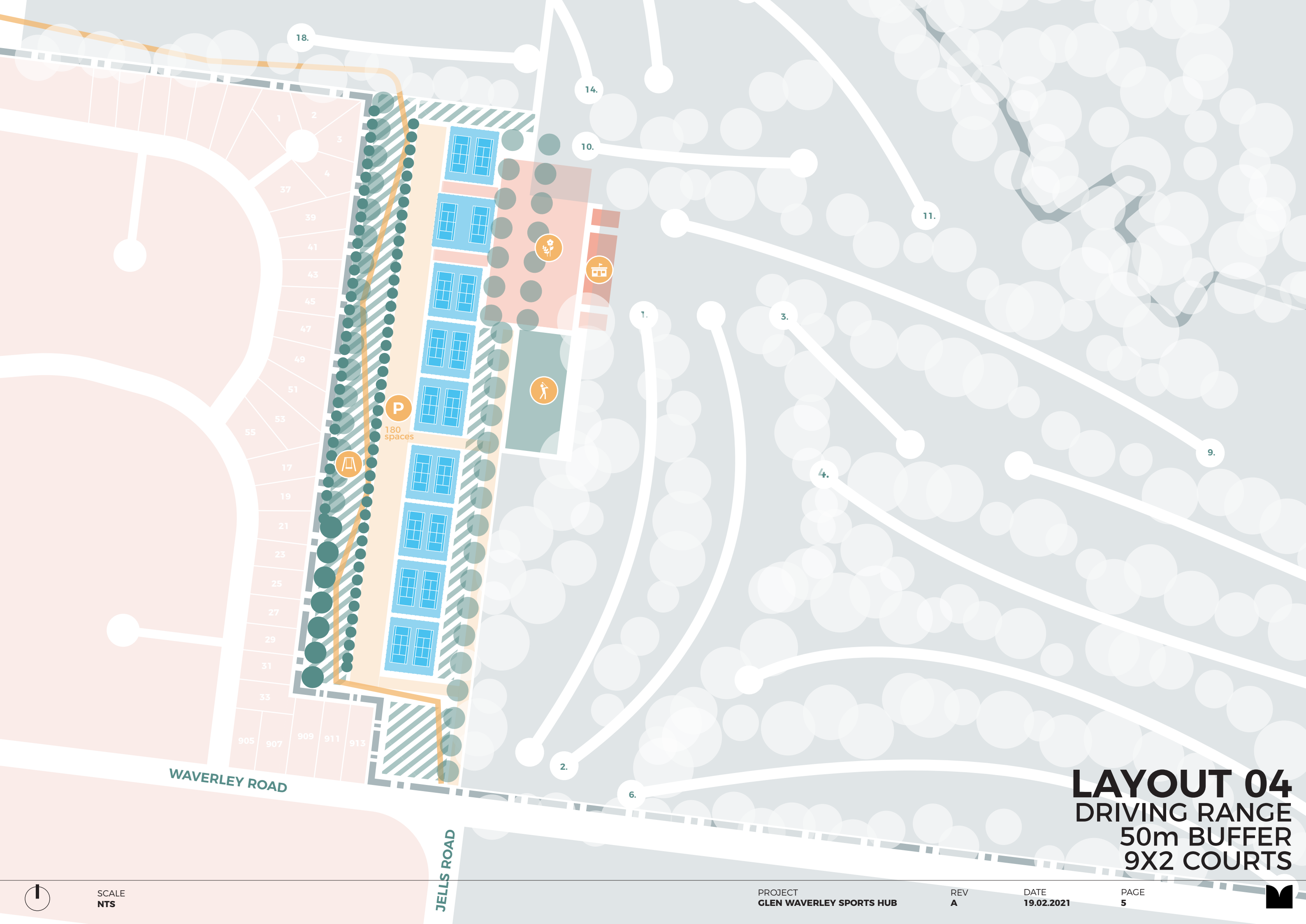
PROJECT
GLEN WAVERLEY SPORTS HUB

REV
A

DATE
19.02.2021

PAGE
4





LAYOUT 04

DRIVING RANGE 50m BUFFER 9X2 COURTS



SCALE
NTS

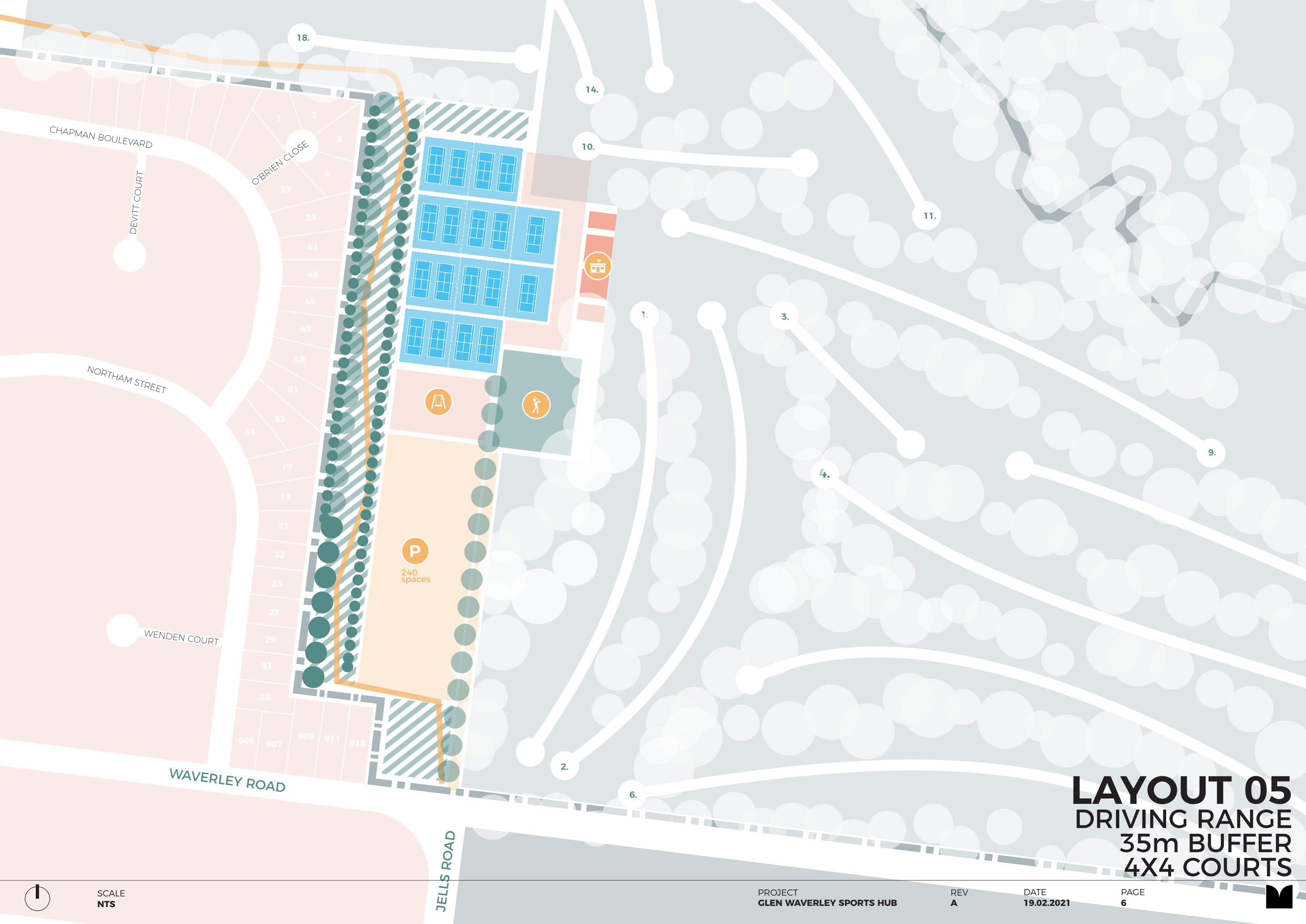
PROJECT
GLEN WAVERLEY SPORTS HUB

REV
A

DATE
19.02.2021

PAGE
5





LAYOUT 05

DRIVING RANGE
35m BUFFER
4X4 COURTS



SCALE
NTS

PROJECT
GLEN WAVERLEY SPORTS HUB

REV
A

DATE
19.02.2021

PAGE
6





LAYOUT 06

DRIVING RANGE

35m BUFFER

4X4 COURTS

PAVILION ADJACENT TO RESIDENTS



SCALE
NTS

INTERSECT
UPGRADE

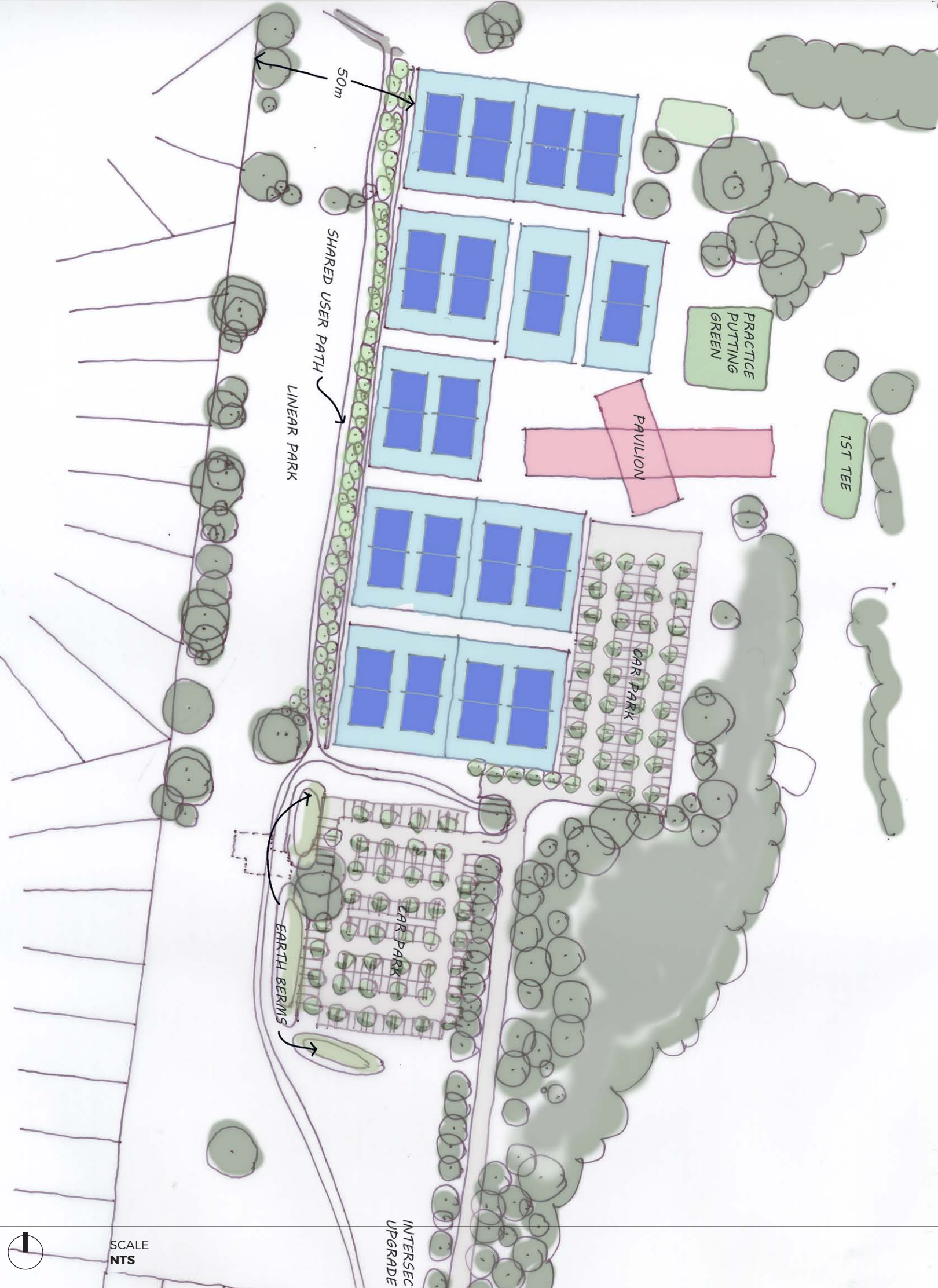
PROJECT
GLEN WAVERLEY SPORTS HUB

REV
A

DATE
19.02.2021

PAGE
7





LAYOUT 07

50m BUFFER



SCALE
NTS

PROJECT
GLEN WAVERLEY SPORTS HUB

REV
A

DATE
19.02.2021

PAGE
8





LAYOUT 08

75-100m BUFFER





LAYOUT 09a

GLENVALE SITE



SCALE
NTS

PROJECT
GLEN WAVERLEY SPORTS HUB

REV
A

DATE
19.02.2021

PAGE
10





LAYOUT 09b

GLENVALE SITE



SCALE
NTS

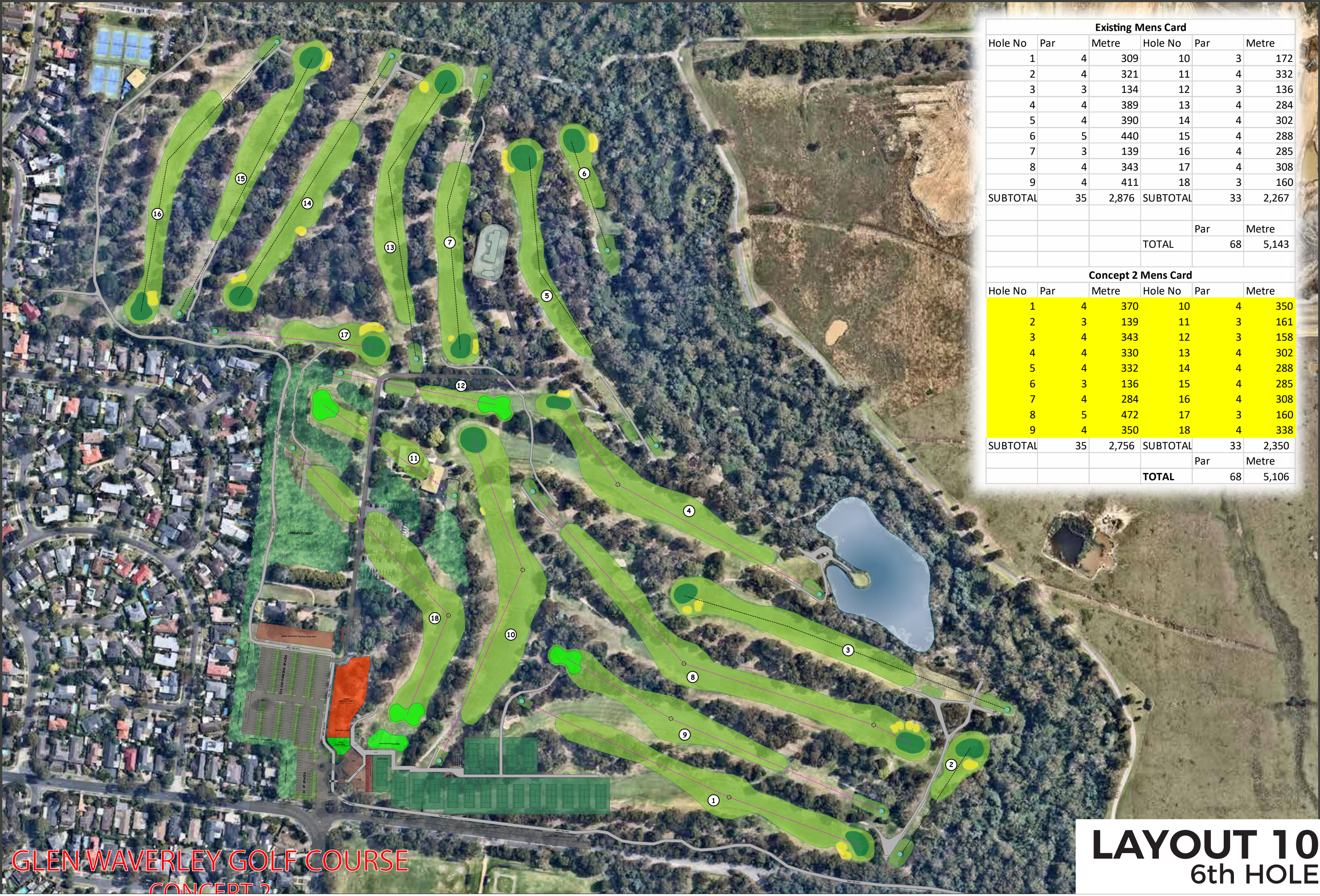
PROJECT
GLEN WAVERLEY SPORTS HUB

REV
A

DATE
19.02.2021

PAGE
11





| Existing Mens Card | | | | | |
|--------------------|-----|-------|----------|-----|-------|
| Hole No | Par | Metre | Hole No | Par | Metre |
| 1 | 4 | 309 | 10 | 3 | 172 |
| 2 | 4 | 321 | 11 | 4 | 332 |
| 3 | 3 | 134 | 12 | 3 | 136 |
| 4 | 4 | 389 | 13 | 4 | 284 |
| 5 | 4 | 390 | 14 | 4 | 302 |
| 6 | 5 | 440 | 15 | 4 | 288 |
| 7 | 3 | 139 | 16 | 4 | 285 |
| 8 | 4 | 343 | 17 | 4 | 308 |
| 9 | 4 | 411 | 18 | 3 | 160 |
| SUBTOTAL | 35 | 2,876 | SUBTOTAL | 33 | 2,267 |
| | | | | Par | Metre |
| | | | TOTAL | 68 | 5,143 |

| Concept 2 Mens Card | | | | | |
|---------------------|-----|-------|----------|-----|-------|
| Hole No | Par | Metre | Hole No | Par | Metre |
| 1 | 4 | 370 | 10 | 4 | 350 |
| 2 | 3 | 139 | 11 | 3 | 161 |
| 3 | 4 | 343 | 12 | 3 | 158 |
| 4 | 4 | 330 | 13 | 4 | 302 |
| 5 | 4 | 332 | 14 | 4 | 288 |
| 6 | 3 | 136 | 15 | 4 | 285 |
| 7 | 4 | 284 | 16 | 4 | 308 |
| 8 | 5 | 472 | 17 | 3 | 160 |
| 9 | 4 | 350 | 18 | 4 | 338 |
| SUBTOTAL | 35 | 2,756 | SUBTOTAL | 33 | 2,350 |
| | | | | Par | Metre |
| | | | TOTAL | 68 | 5,106 |

GLEN WAVERLEY GOLF COURSE
CONCEPT 2

LAYOUT 10
6th HOLE



LAYOUT 11

1st HOLE



SCALE
NTS

PROJECT
GLEN WAVERLEY SPORTS HUB

REV
A

DATE
19.02.2021

PAGE
13





Onsite parking provision assumes 25 on-road spaces are included in calculation. Note that accessible spaces will be required and will reduce the overall number of car spaces available.

NOTE: The existing courts and carpark maintain a 14-15m setback to the property boundary. It is uncertain whether this would need to be retained. Proximity of courts to trees along the road reserve is also a concern.

cages containing 3 courts difficult to light efficiently

safety fencing is required to 16th fairway but still presents safety risk to tennis court users

Pavilion reduced to a 450m² footprint. This may require a two storey structure to meet the 600m² in the brief

Minimal plaza space. Inadequate for intended purpose

Pg 1. Layout 9c (17th Hole) no setback to road reserve



Onsite parking provision assumes 25 on-road spaces are included in calculation. Note that accessible spaces will be required and will reduce the overall number of car spaces available.

NOTE: The existing courts and carpark maintain a 14-15m setback to the property boundary. It is uncertain whether this would need to be retained. Proximity of courts to trees along the road reserve is also a concern.

Minimal plaza space. Inadequate for intended purpose

safety fencing is required to 16th fairway but still presents safety risk to tennis court users

Pavilion footprint is approx 600m². Further reduction in footprint could be achieved with a two storey pavilion.

Pg 2. Layout 9c (17th Hole) with setback to road reserve