

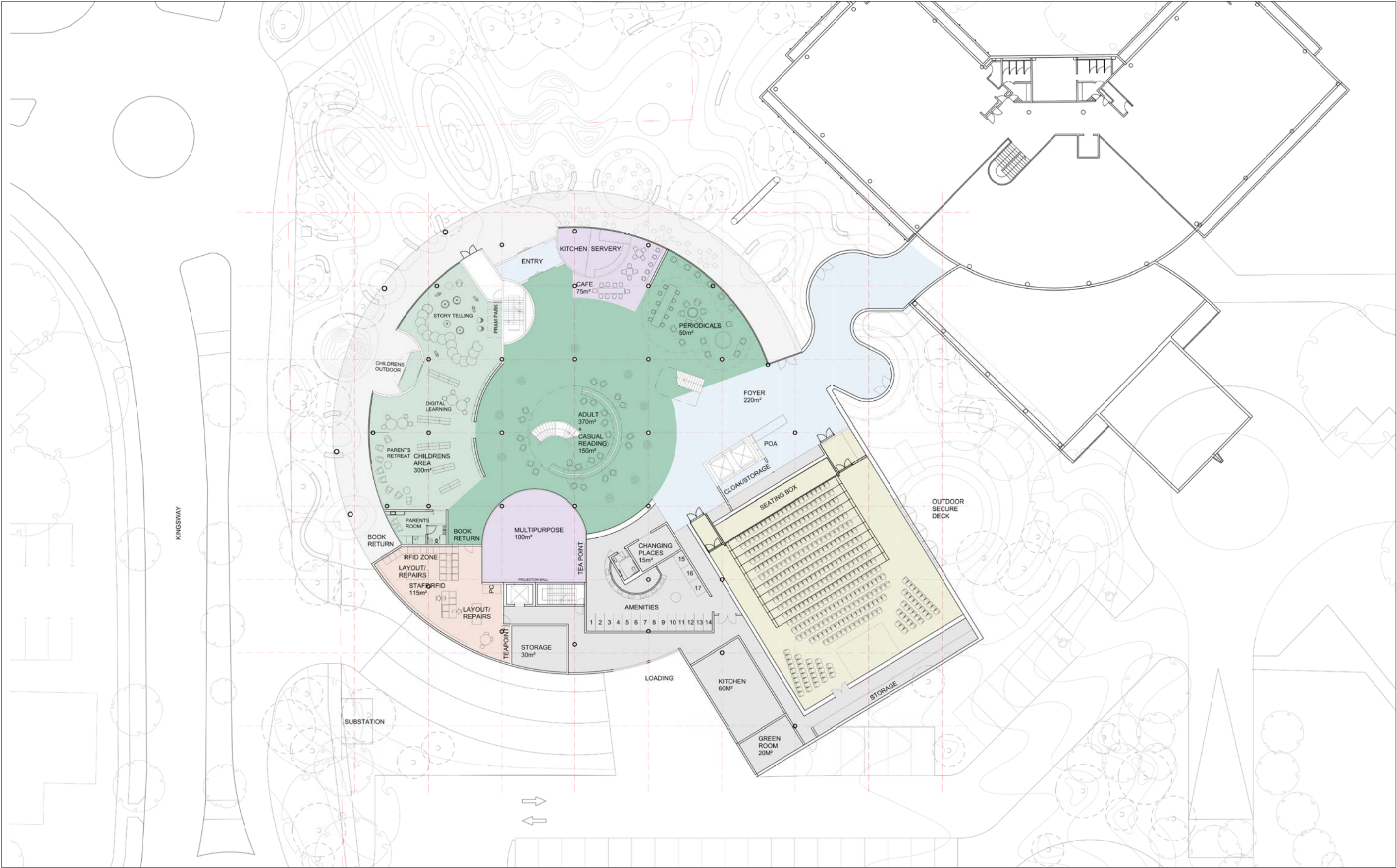
## 3.0 ARCHITECTURAL DRAWINGS



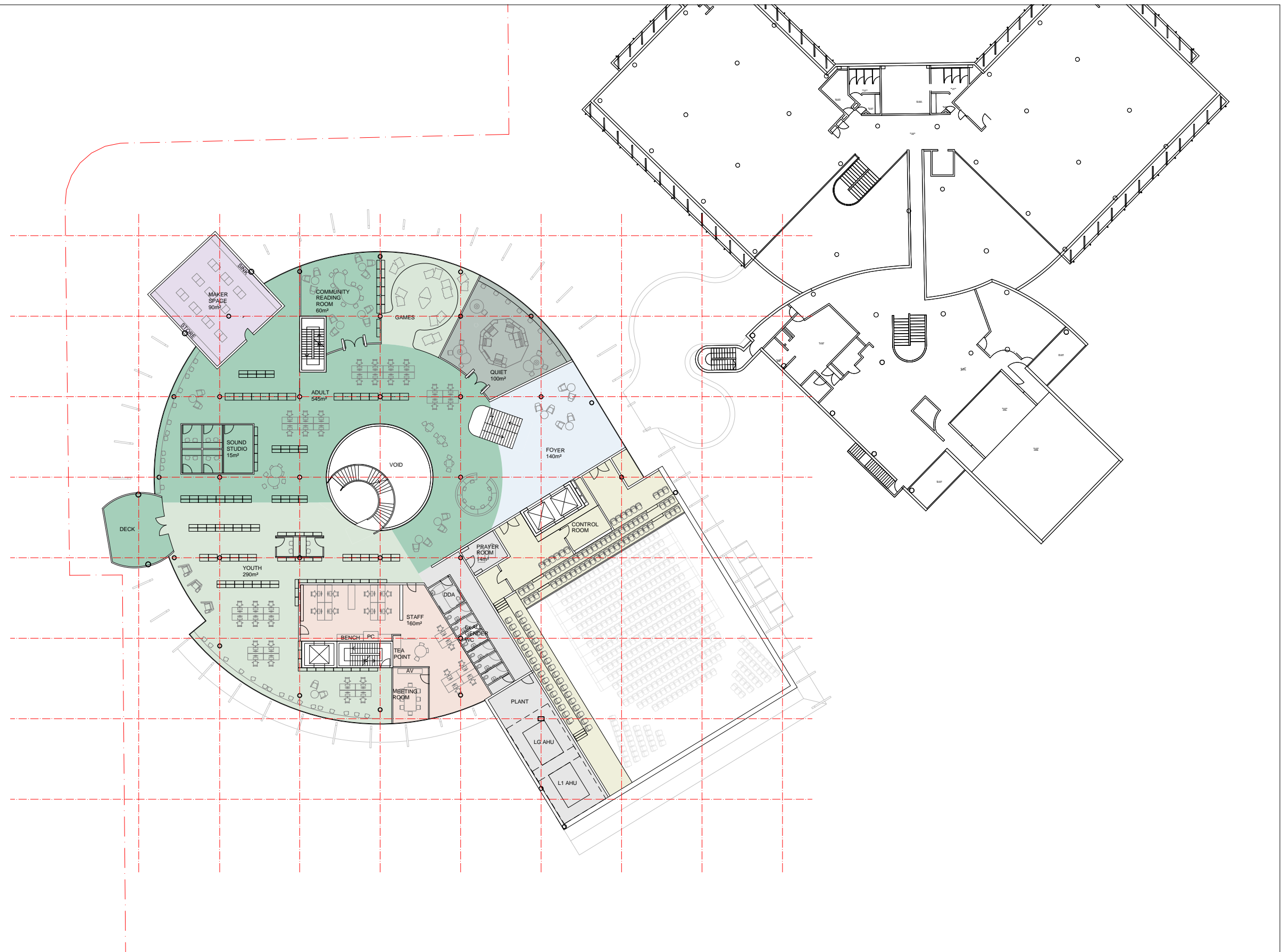




GROUND FLOOR PLAN

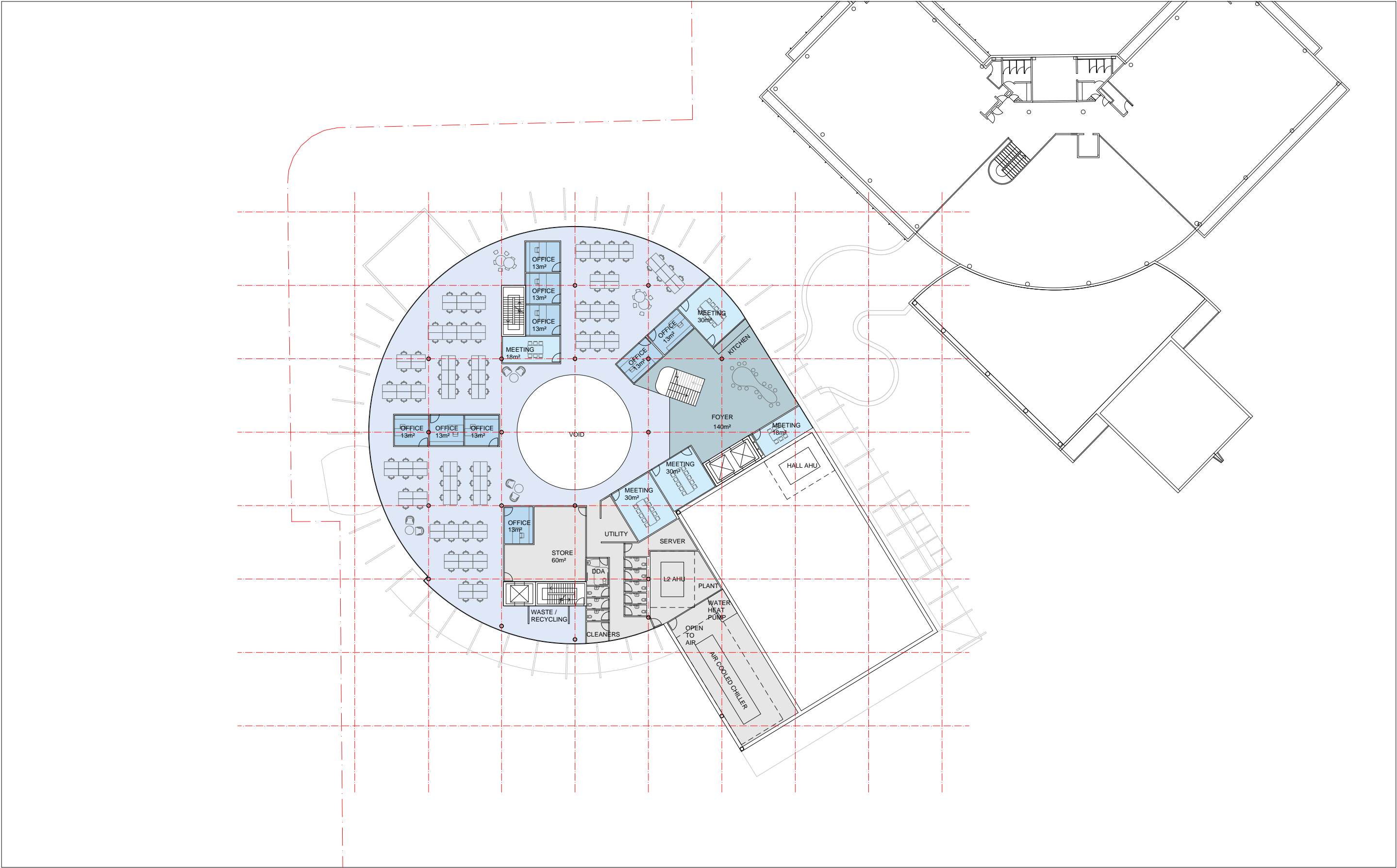


# LEVEL 01 PLAN



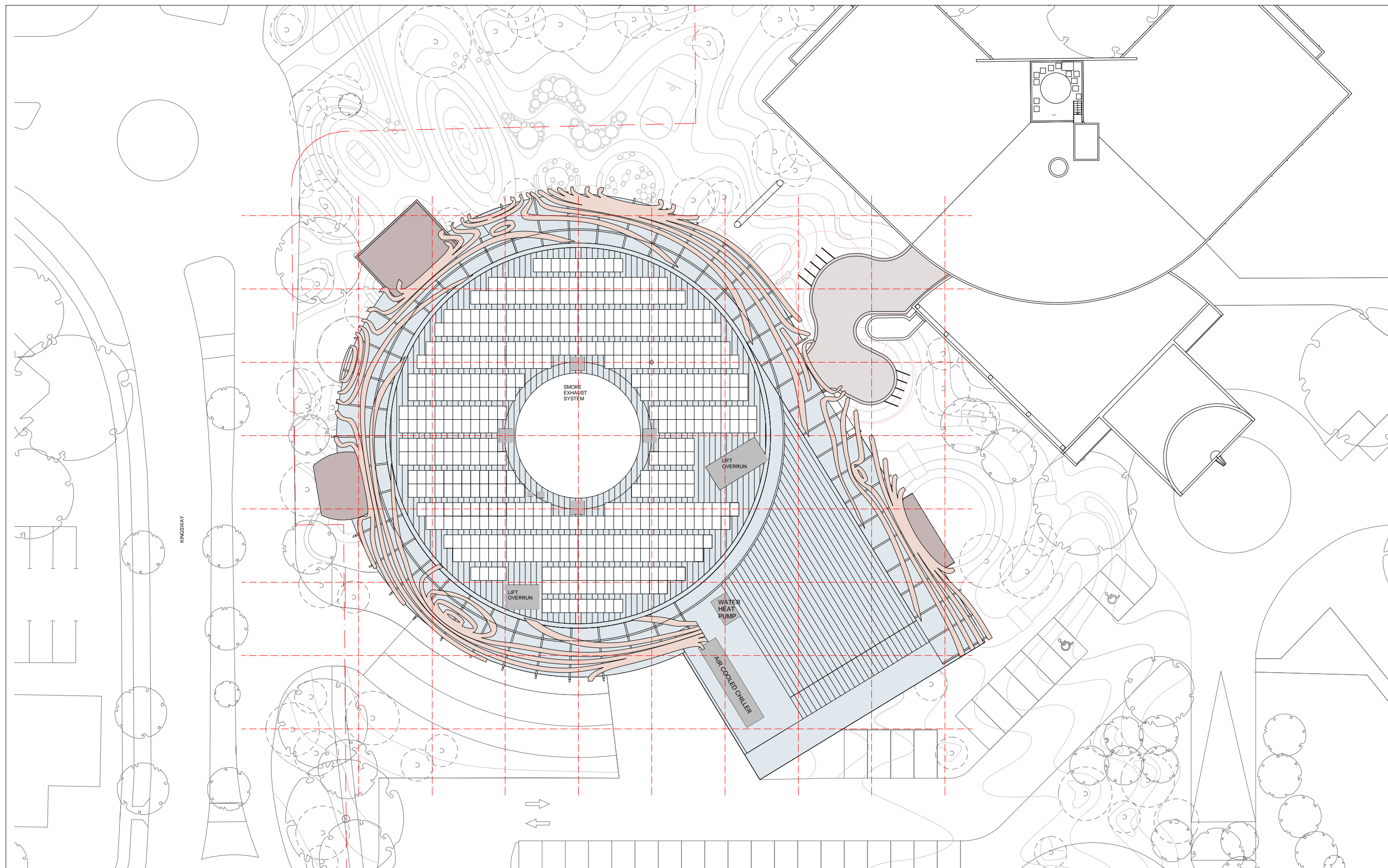


LEVEL 02 PLAN



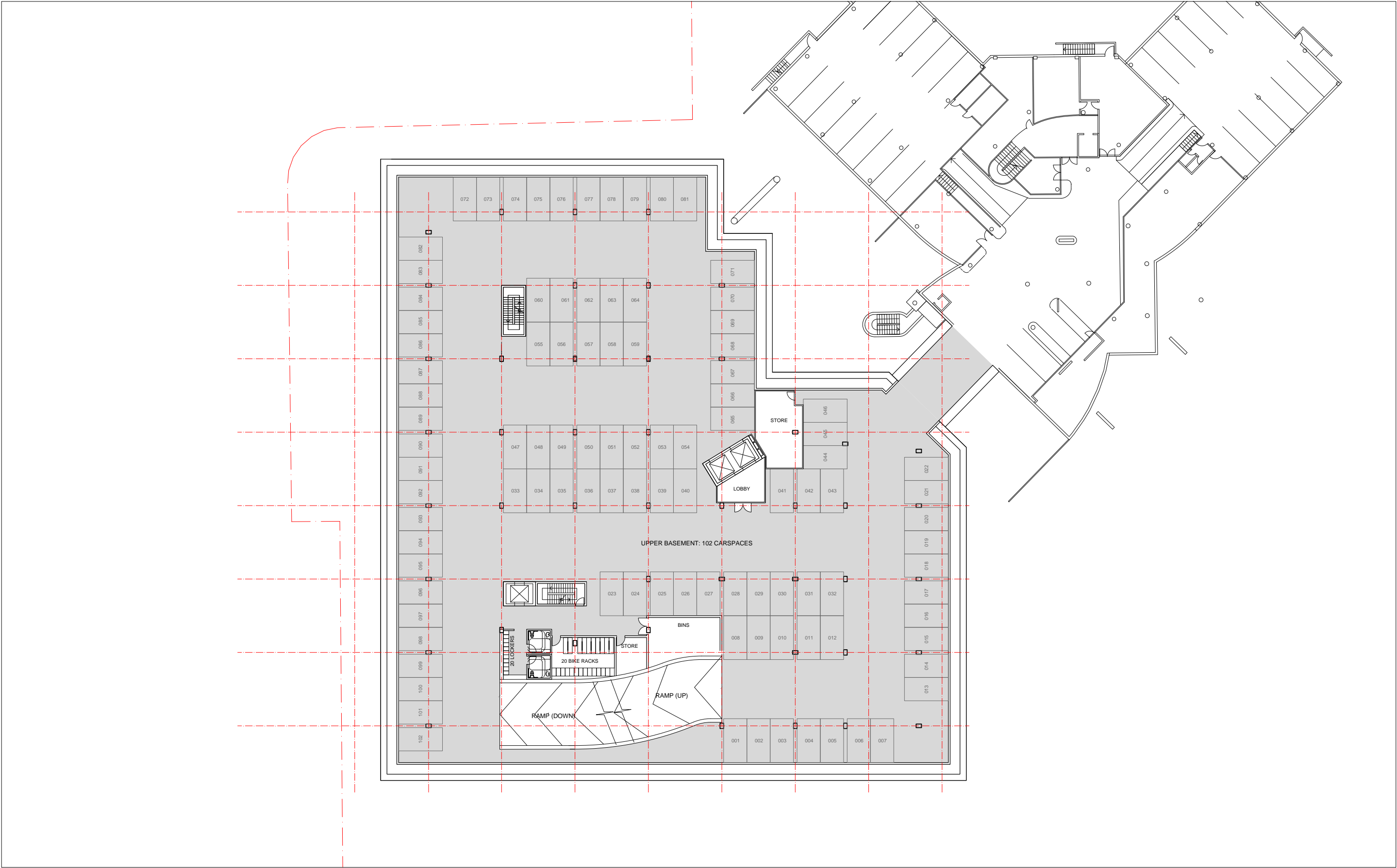


# ROOF PLAN



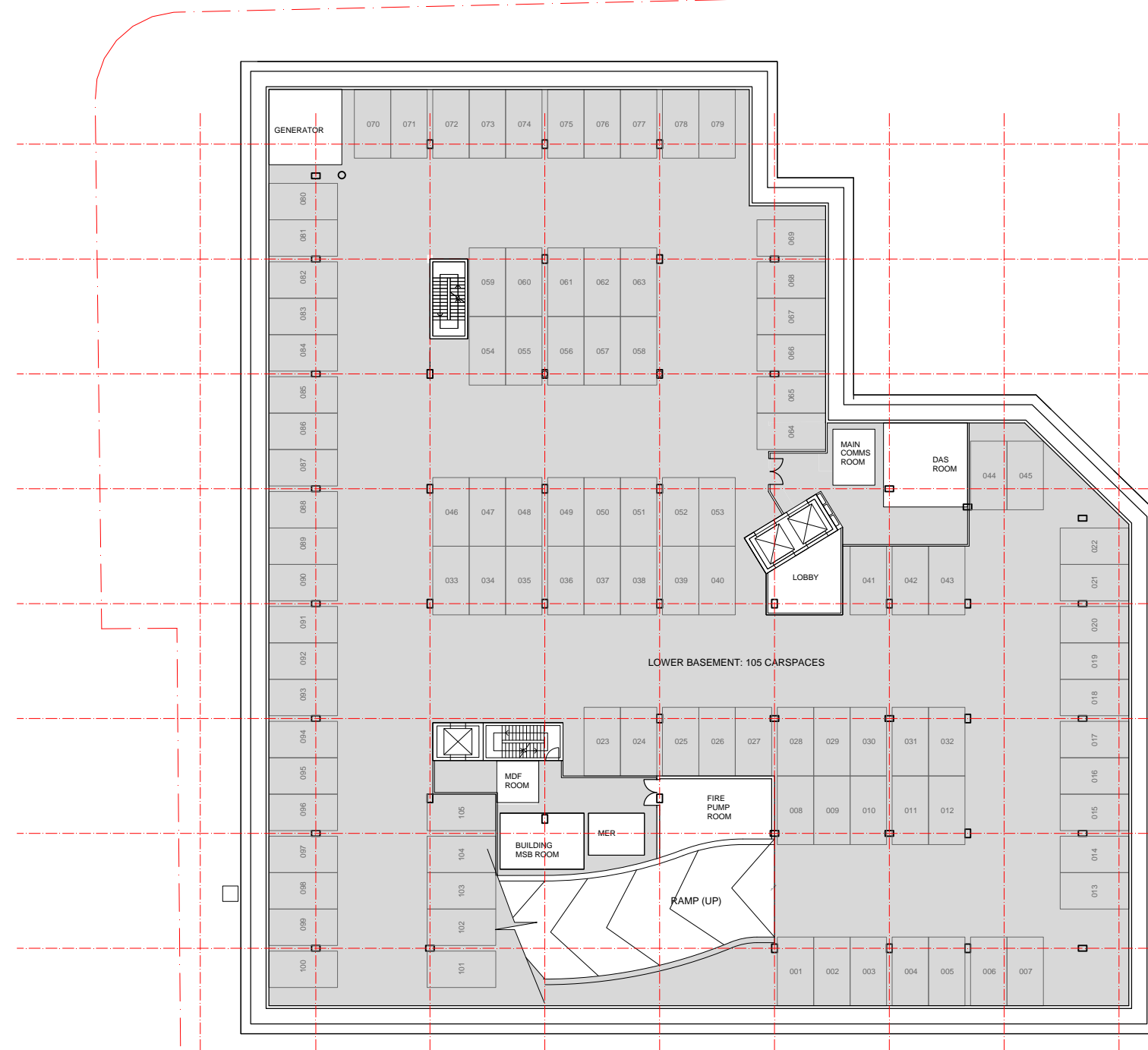


BASEMENT 01 PLAN





# BASEMENT 02 PLAN

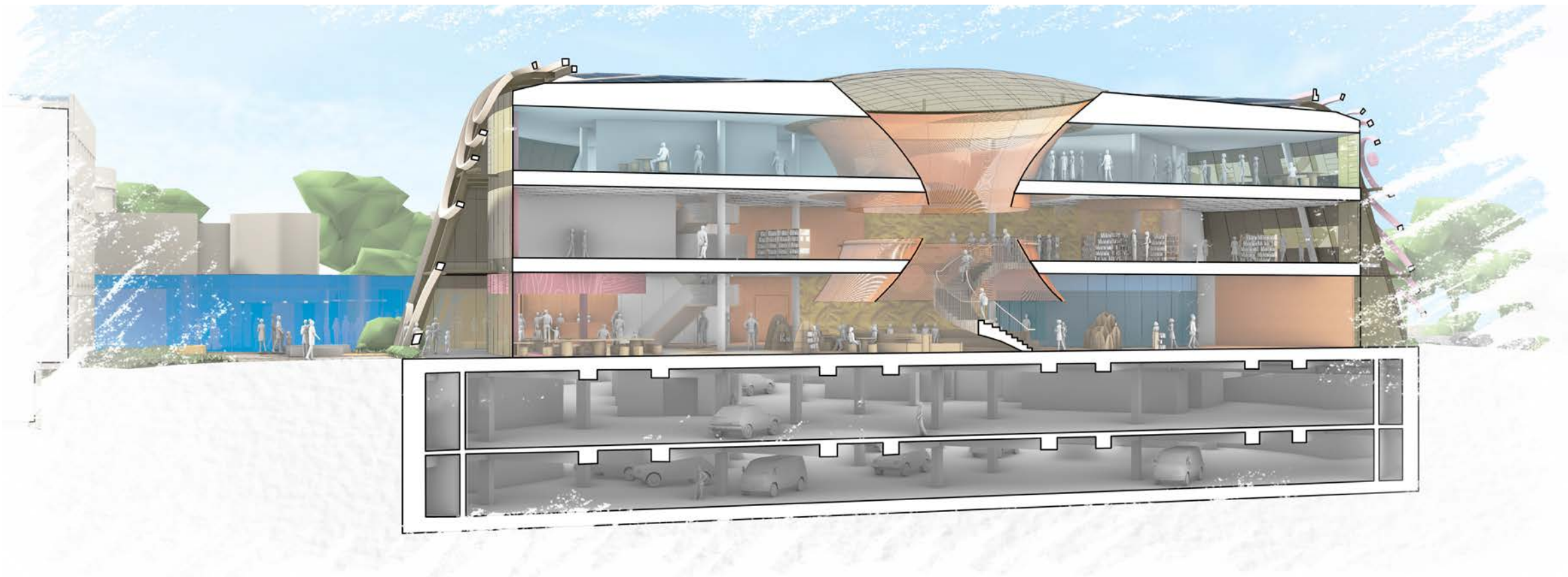




SECTIONS



PERSPECTIVE SECTION - NORTH/SOUTH



PERSPECTIVE SECTION - EAST/WEST



# RENDERS

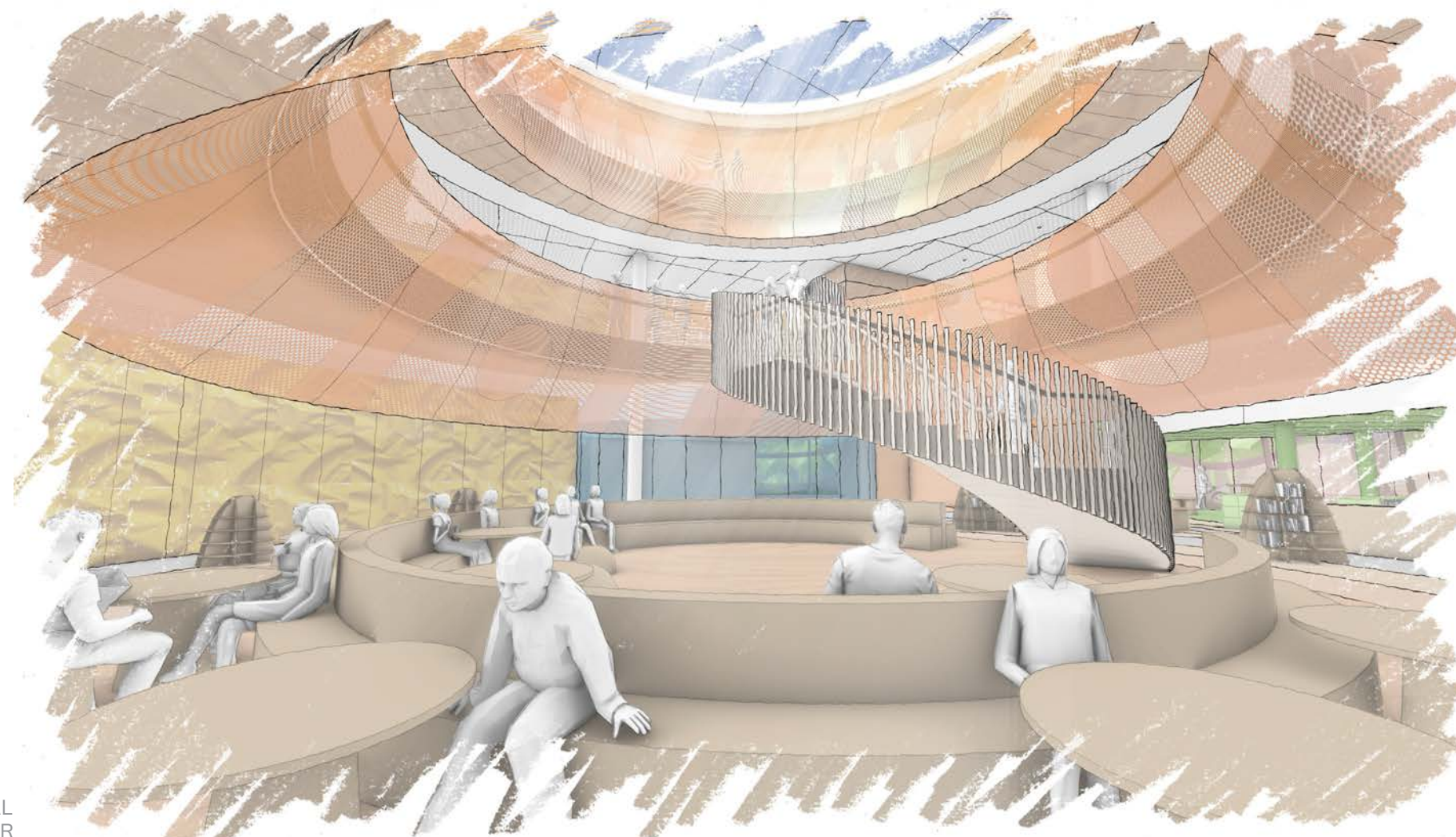








# INTERIOR RENDERS



GROUND FLOOR: CENTRAL  
SKYLIGHT AND STAIR



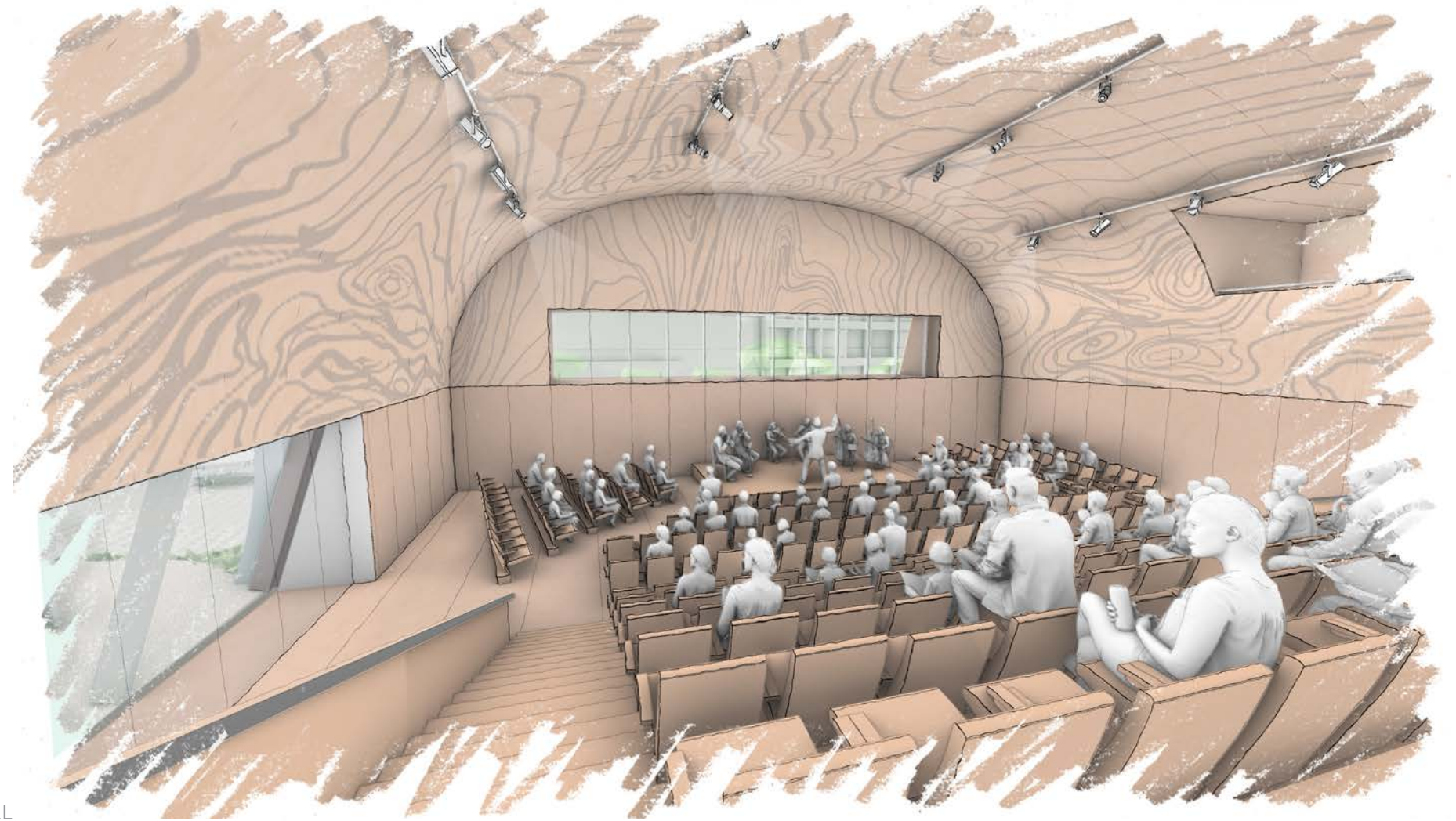
GROUND FLOOR: CHILDREN'S LIBRARY



GROUND FLOOR: VIEW STANDING IN  
ENTRY LOOKING TOWARDS CENTER



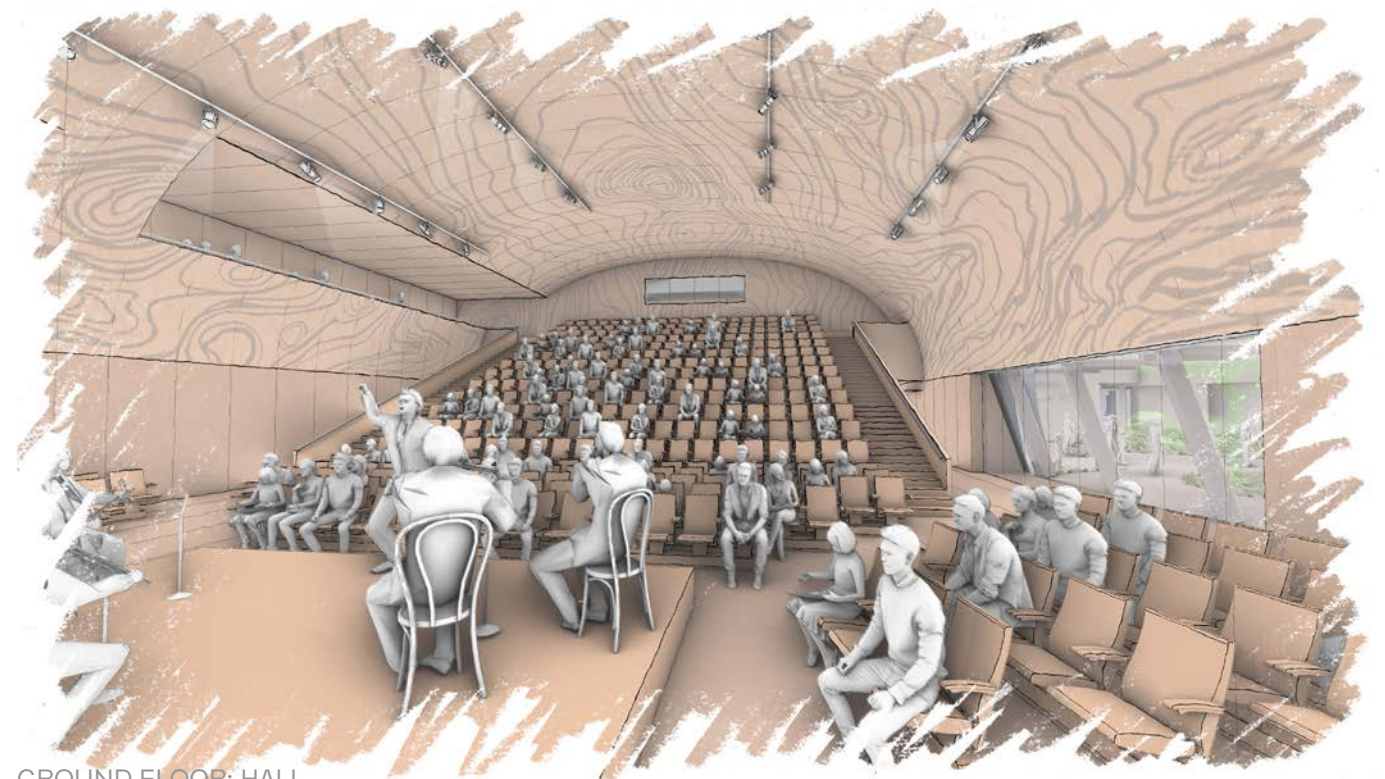
## INTERIOR RENDERS



FIRST FLOOR HALL



GROUND FLOOR: LINK FROM CIVIC CENTRE TO LIBRARY

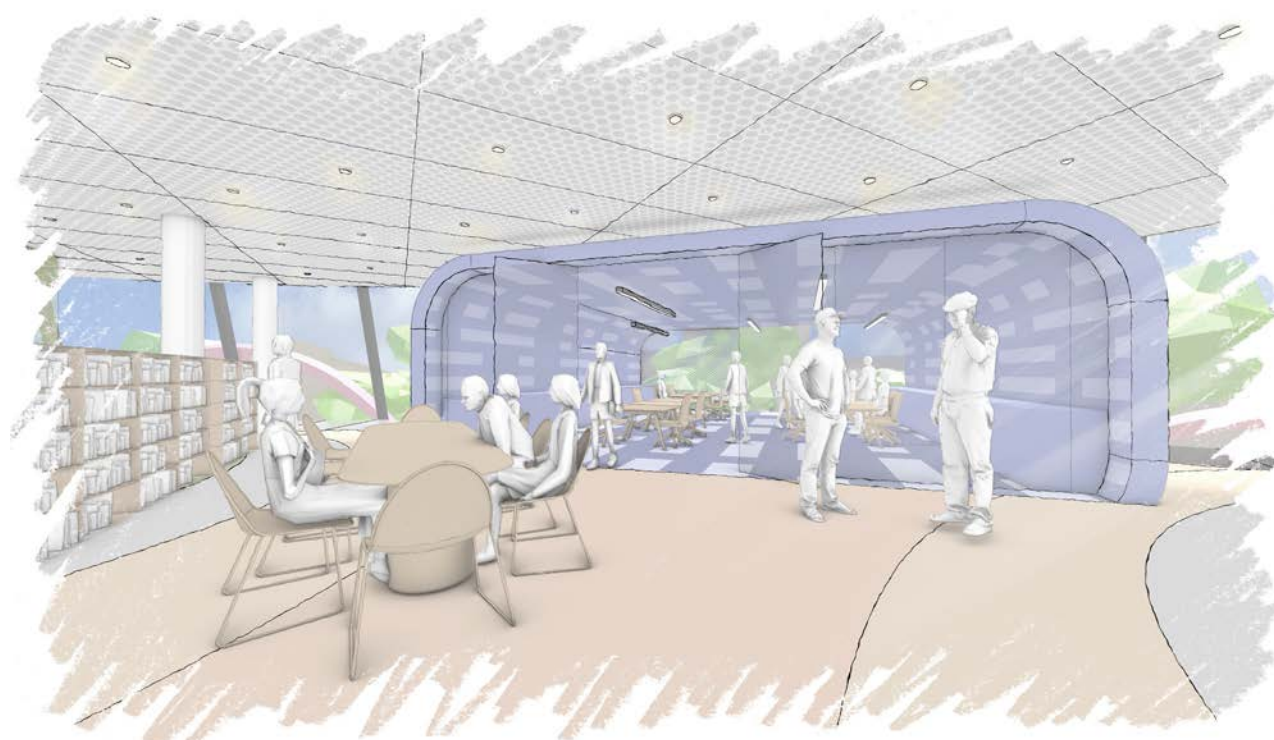


GROUND FLOOR: HALL





FIRST FLOOR: ADULT LIBRARY



FIRST FLOOR: MAKERS SPACE

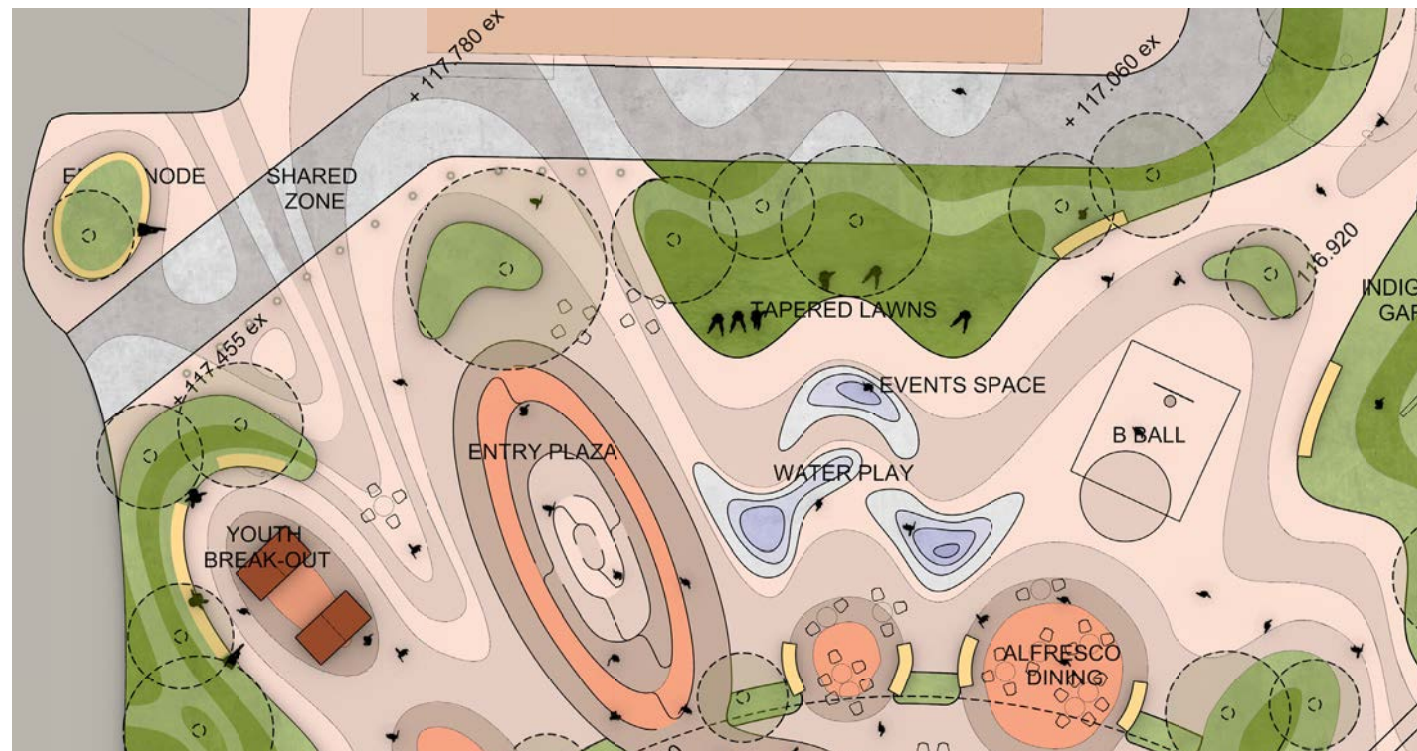


# LANDSCAPE PLAN





## ACTIVE



### ACTIVE ENTRY

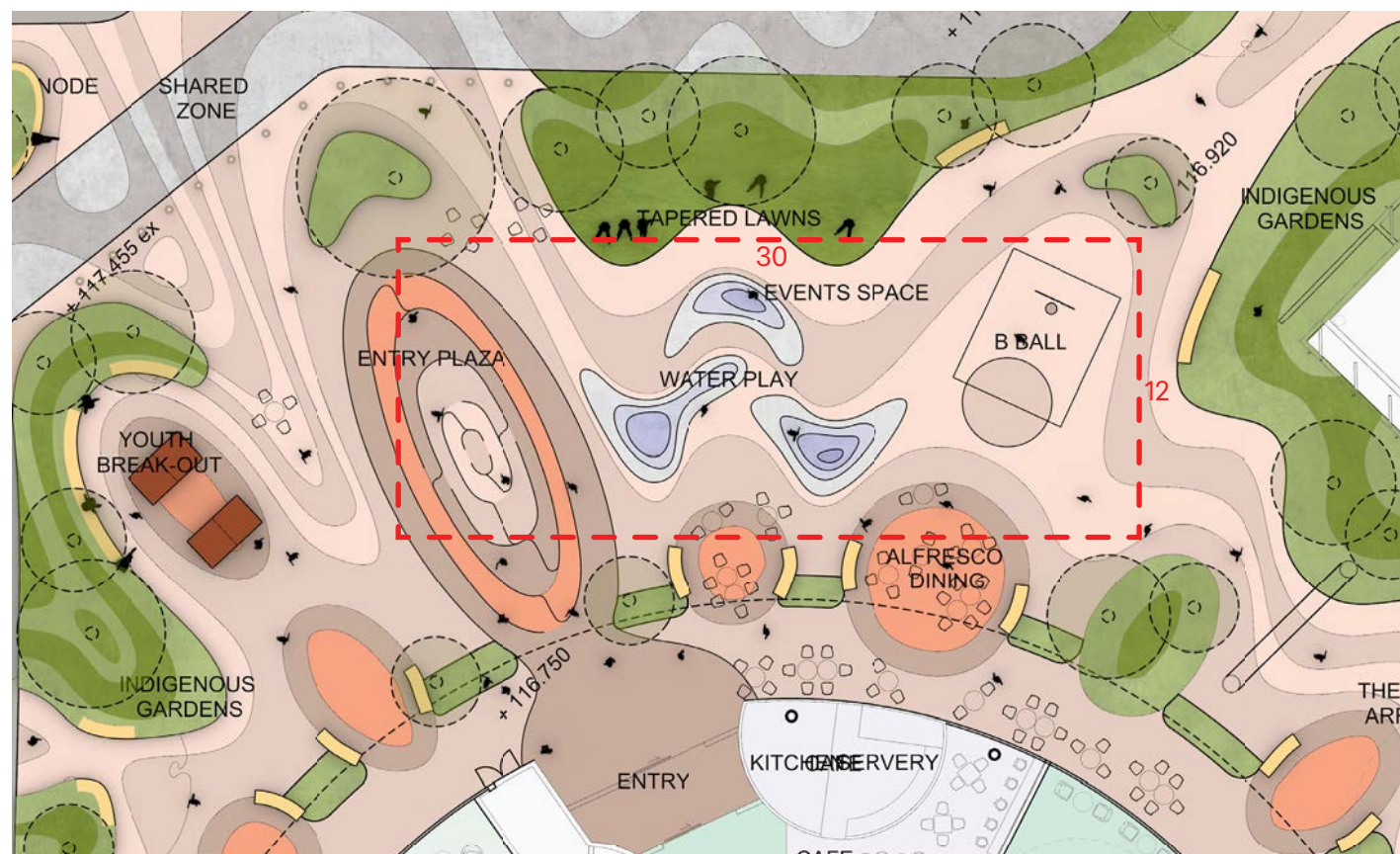
The entry sequence from Kingsway and the Glen Waverly Activity Precinct creates a vibrant, active arrival to the site. Reaching out to meet the existing retail and dining fabric of Kingsway, the entry forecourt extends the formal and informal dining and social opportunities into the new arrival.

Serpentine garden beds with integrated seating and rich vegetation define the arrival sequence, creating an immersive experience upon arrival, while retaining strong connections to surrounds. These articulated planting zones create social nooks of various sizes for intimate conversations and larger groups to gather.

A mosaic labyrinth welcomes the visitor to the library, offering a meditative entry to the building.



## EVENT PLAZA



### EVENT PLAZA

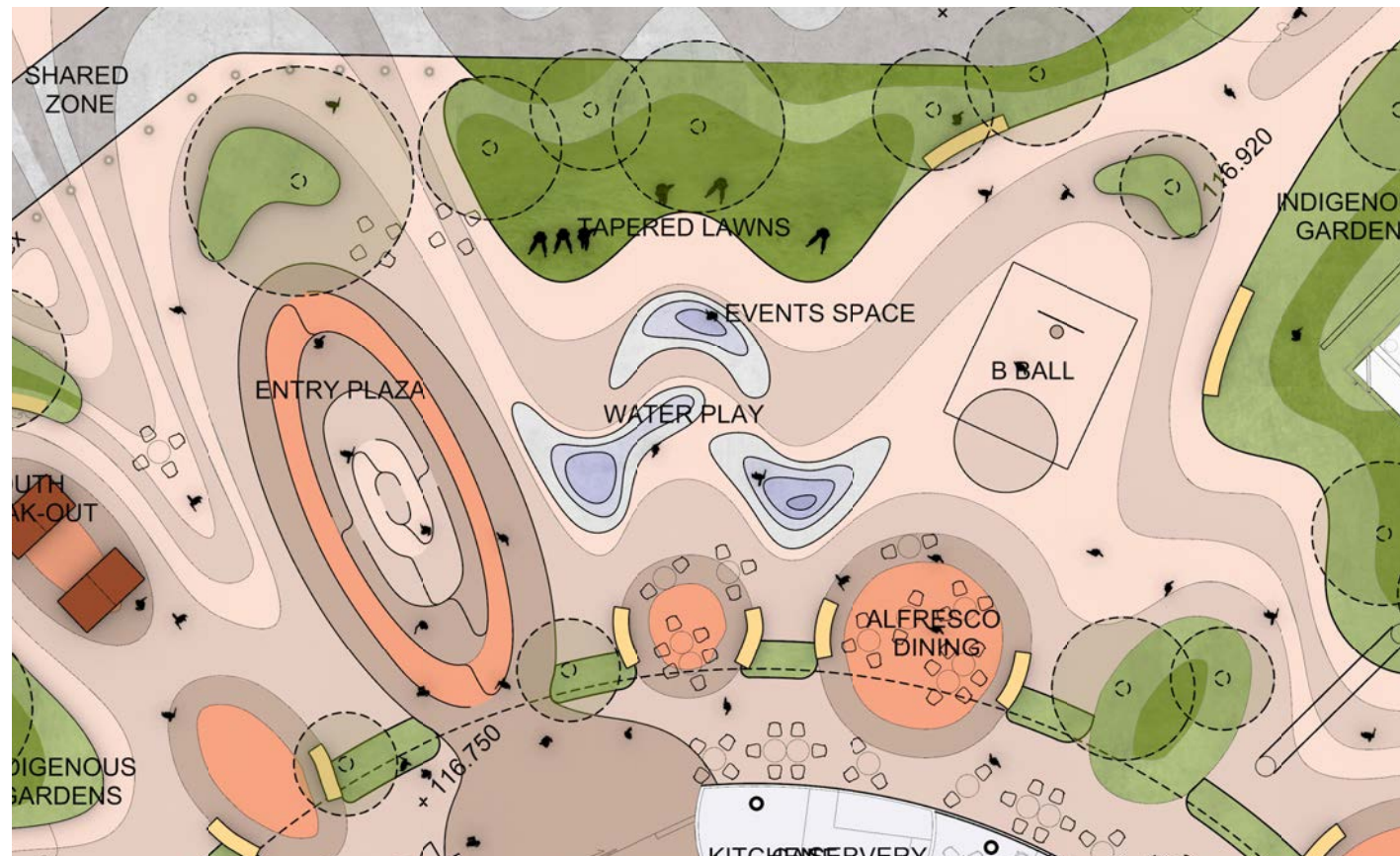
A 360m<sup>2</sup> flexible event plaza is integrated into the entry sequence of the library. Like the vibrant piazzas of Rome, the large, mosaic open space is able to cater for a multitude of activities, from markets and exhibitions, to outdoor cinemas and performances.

When not activated as an event space, the plaza will remain a hub of activity thanks to a perimeter of active edges and interpretive paving patterns. It provides a central meeting space as well as spill out for cafe dining.





## WATER PLAY

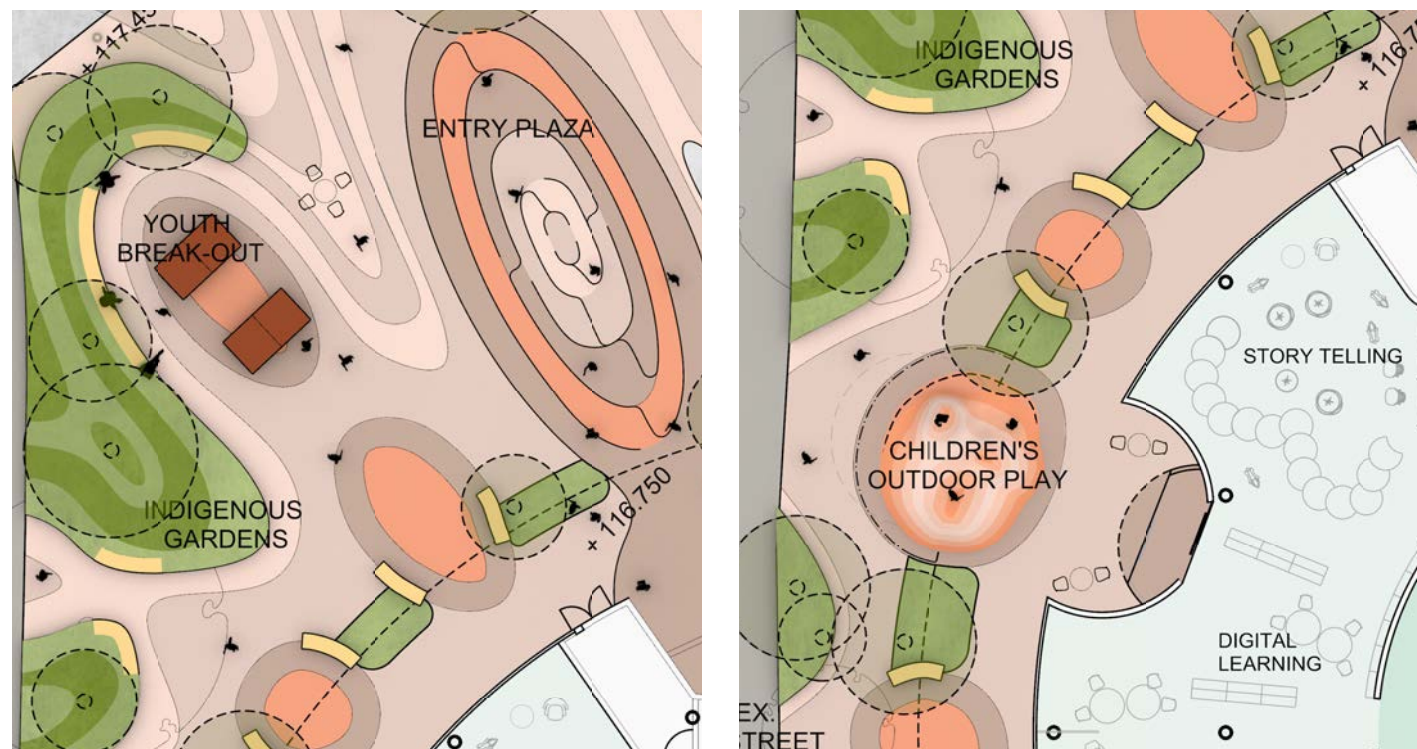


### WATER PLAY

Temporal waterplay elements incorporated into the entry plaza space, allowing for passing or focussed engagement. Comprising of water jets, misters and localised drainage, this element sits within the flat paving of the entry plaza, creating a cool microclimate in the summer months, engaging play elements, while the integration within the flat plaza allows for the operation of elements to be controlled and events and installations to be held over the top when required.



## CHILDREN / YOUTH SPACE



### CHILDREN / YOUTH SPACE

A collection of formal and informal breakout spaces within the landscape allow for moments of play, hangout and socialising. A mixture of prescribed and non-prescriptive spaces allow for structured and imaginative play, integral to the cognitive and social development of children and young people.

Programmed activities such as table tennis and basketball within the entry plaza provide active, social opportunities at the entry to the library for all ages, while social seating integrated into the gardens create moments for small and large groups to gather.

A dedicated children's play area along the colonnade associates directly with the children's space within the library, while being contained to control movement and allow for passive surveillance.

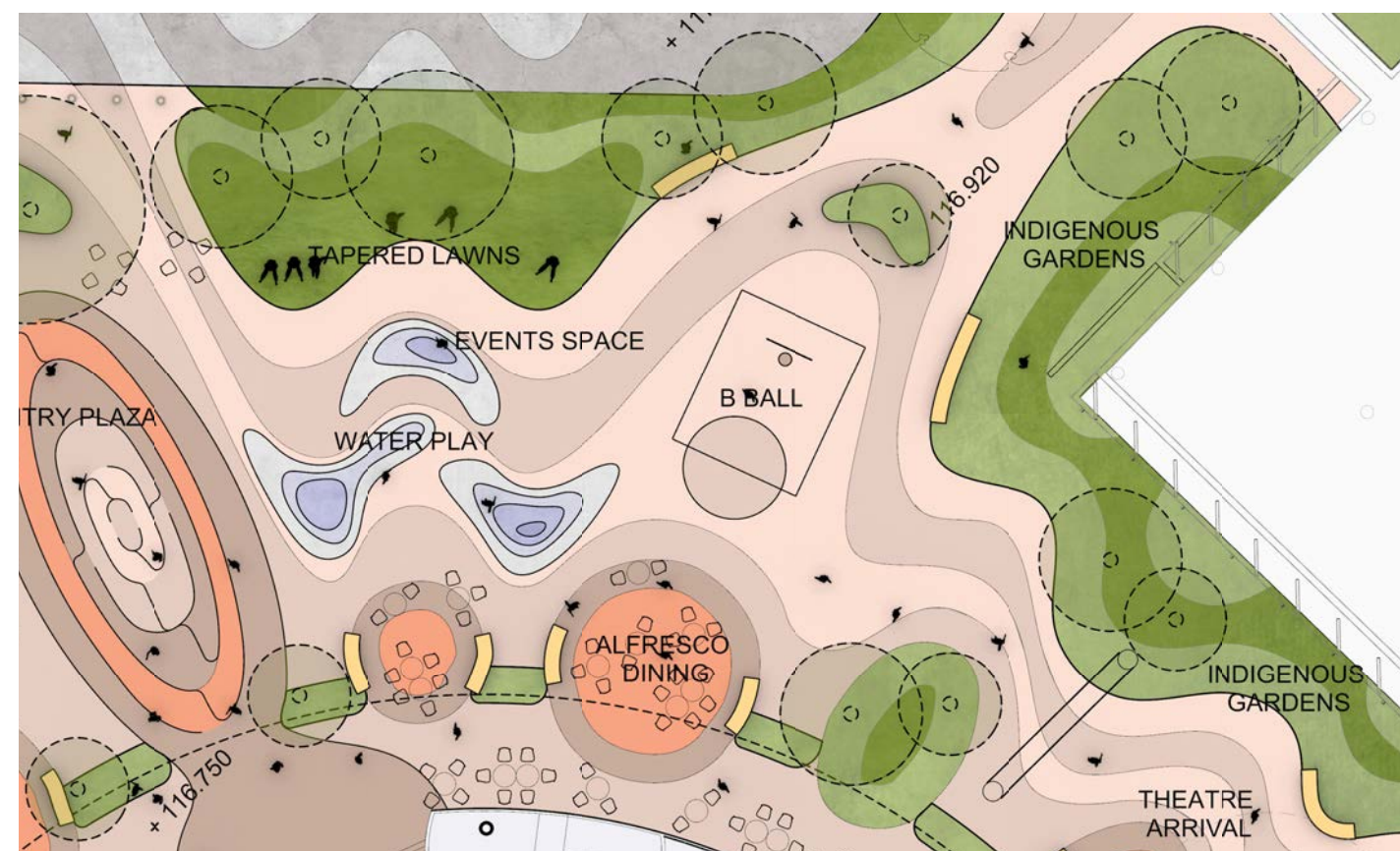




## THEATRE DECK



## INDIGENOUS GARDENS



### THEATRE DECK

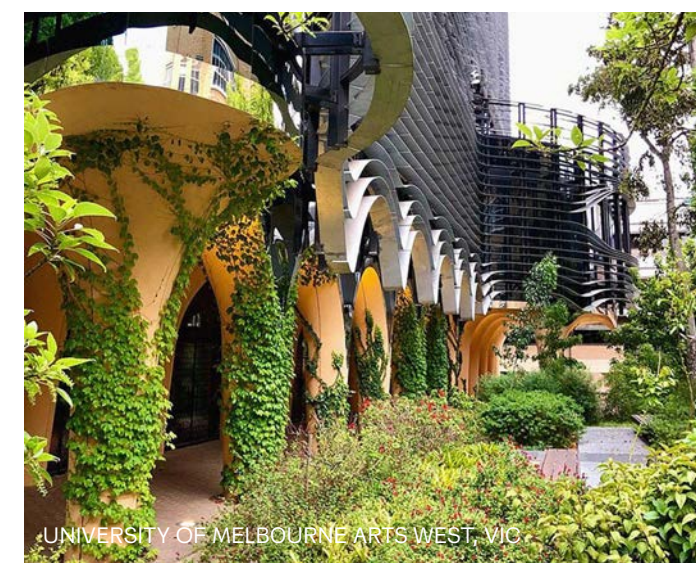
A large break-out deck is associated with the civic hall, catering for drinks and celebrations. The enclosed space sits comfortably between the new library building and the existing Seidler building. Nestled within dense planting the space caters for intimate functions while maintaining direct access to the internal and external surrounds.



### INDIGENOUS GARDENS

Vast swathes of indigenous planting envelope the proposed building and tie into the existing landscape. Combinations of low tussock grasses and creepers are planted around the buildings, to reinforce the monumental, civic nature of these facilities. Larger native bushes and trees are positioned further away from the buildings, creating cool microclimates and nooks for groups to gather.

The planting palette responds to the endemic planting of the area, and considered density and openness have been used as active design tools to accordingly open and close spaces around the building.





## LIGHTING



### LIGHTING

Opportunities for feature lighting is to be considered throughout the landscape precinct, allowing safe movement throughout the space into the evenings, and enabling the activation of precinct throughout the year.

Projection events, film screenings and festivals can create new interactive experiences with the buildings and landscape, while integrated lighting within the landscape can reveal new experiences throughout the day.

Audio and interactive elements can be integrated as part of a lighting strategy within the precinct, to create an easily programmable space.

