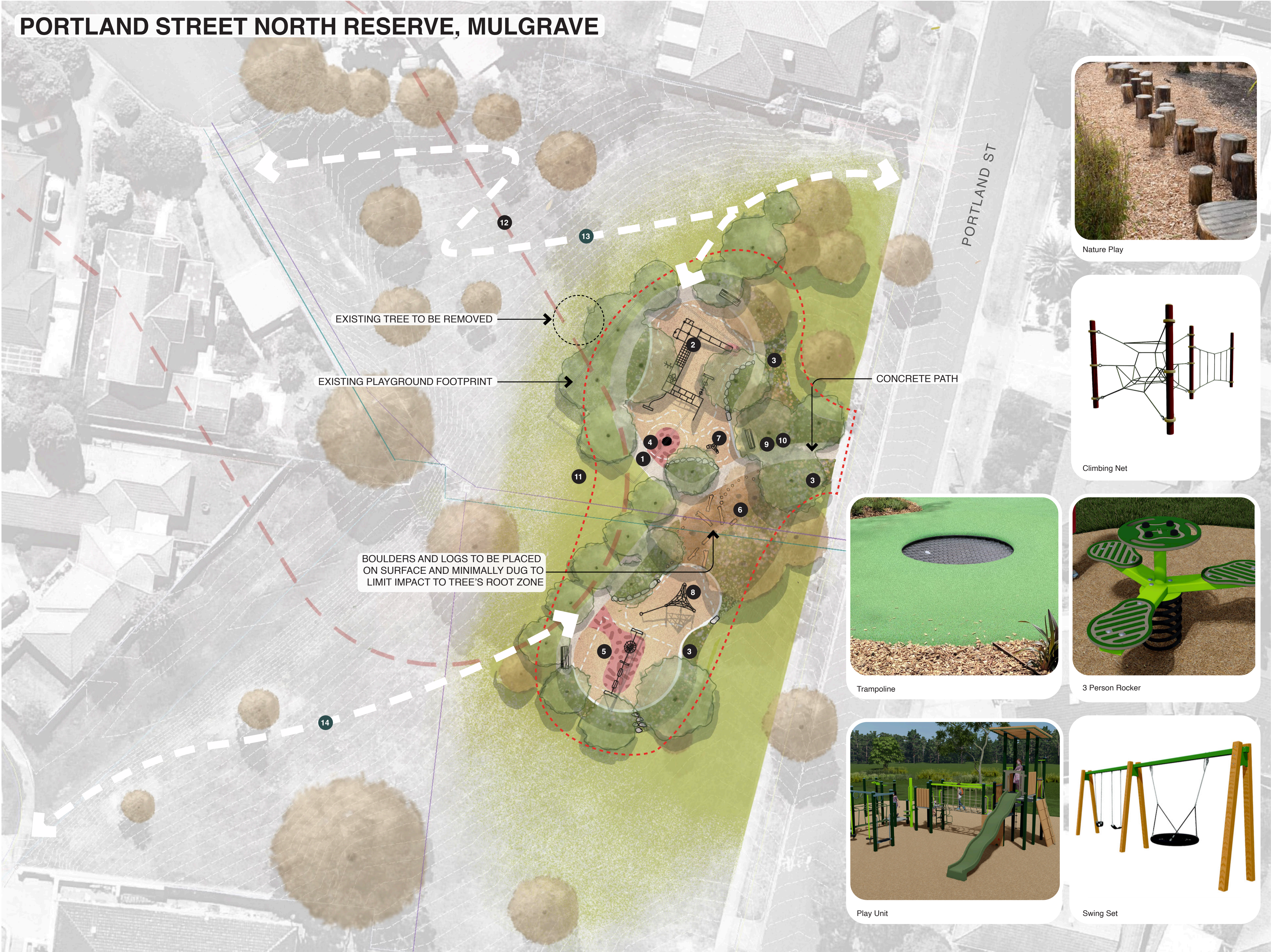


PORTLAND STREET NORTH RESERVE, MULGRAVE



LEGEND

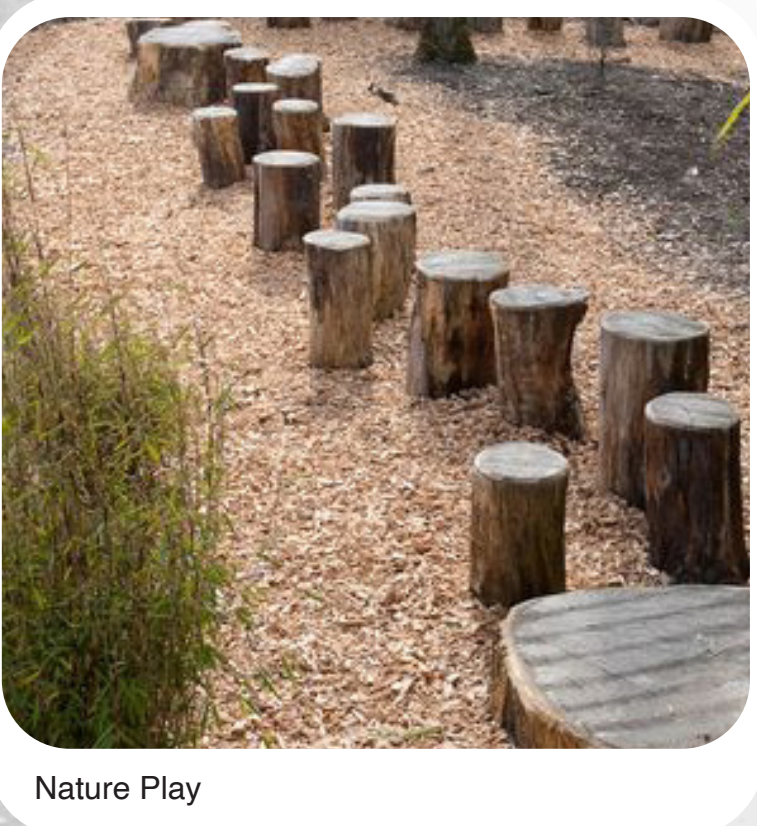
- EXISTING
- EXTENT OF WORKS
  - TREE
- PROPOSED
- TREE
  - IMPACT ATTENUATING SURFACE UNDER PLAY EQUIPMENT
  - PLAYGROUND MULCH
  - TIMBER GARDEN MULCH

KEY

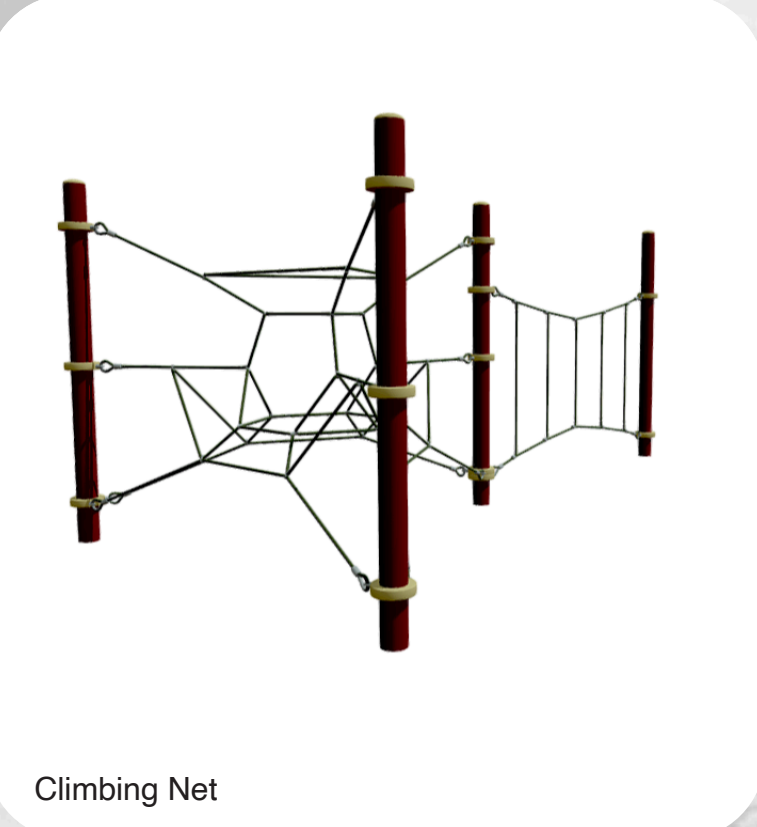
- 1 CONCRETE PATH
- 2 PLAY UNIT
- 3 PLANTING BUFFER TO PORTLAND STREET
- 4 TRAMPOLINE
- 5 SWING SET
- 6 NATURE PLAY UNDER EXISTING TREES
- 7 3 PERSON ROCKER
- 8 CLIMBING NET
- 9 NEW RUBBISH BIN
- 10 RELOCATED PARK SIGN
- 11 OPEN GRASS AREA RETAINED FOR PASSIVE RECREATION
- 12 MELBOURNE WATER INUNDATION OFFSET

POTENTIAL FUTURE WORKS

- 13 PEDESTRIAN CONNECTION TO CERISE PLACE
- 14 PEDESTRIAN CONNECTION TO LING CIRCUIT



Nature Play



Climbing Net



Trampoline



3 Person Rocker



Play Unit



Swing Set

All proposed playground works are subject to funding as approved by Council.

Play equipment material and aesthetics are to be developed further to maximise value and experiences.

0 1 2 5 10M

SCALE  
1:200 @ A1 | 1:400 @ A3  
SHEET  
2 of 2  
DRAWING NO.  
**LSK-100**

NORTH  
  
ISSUE  
**3**

**POLLEN**

Pollen Studio Pty Ltd - Landscape Architects  
BRUNSWICK - Siteworks  
Studio 1 | Level 1 | 33 Saxon Street VIC 3056  
03 9329 7548 | pollen@pollenstudio.com.au  
pollenstudio.com.au | ABN 45 494 020 124



CITY OF  
**MONASH**

PROJECT  
**MONASH PLAYSPACES  
(PORTLAND ST NORTH RESERVE)**

CLIENT  
**City of Monash**  
390 Ferntree Gully Road, Notting Hill VIC 3168

PHASE  
**Concept Phase**

DRAWING TITLE  
**Community Consultation  
Presentation Flyer**