

# **SUBURBAN RAIL LOOP EAST GLEN WAVERLEY**

Community Information Session

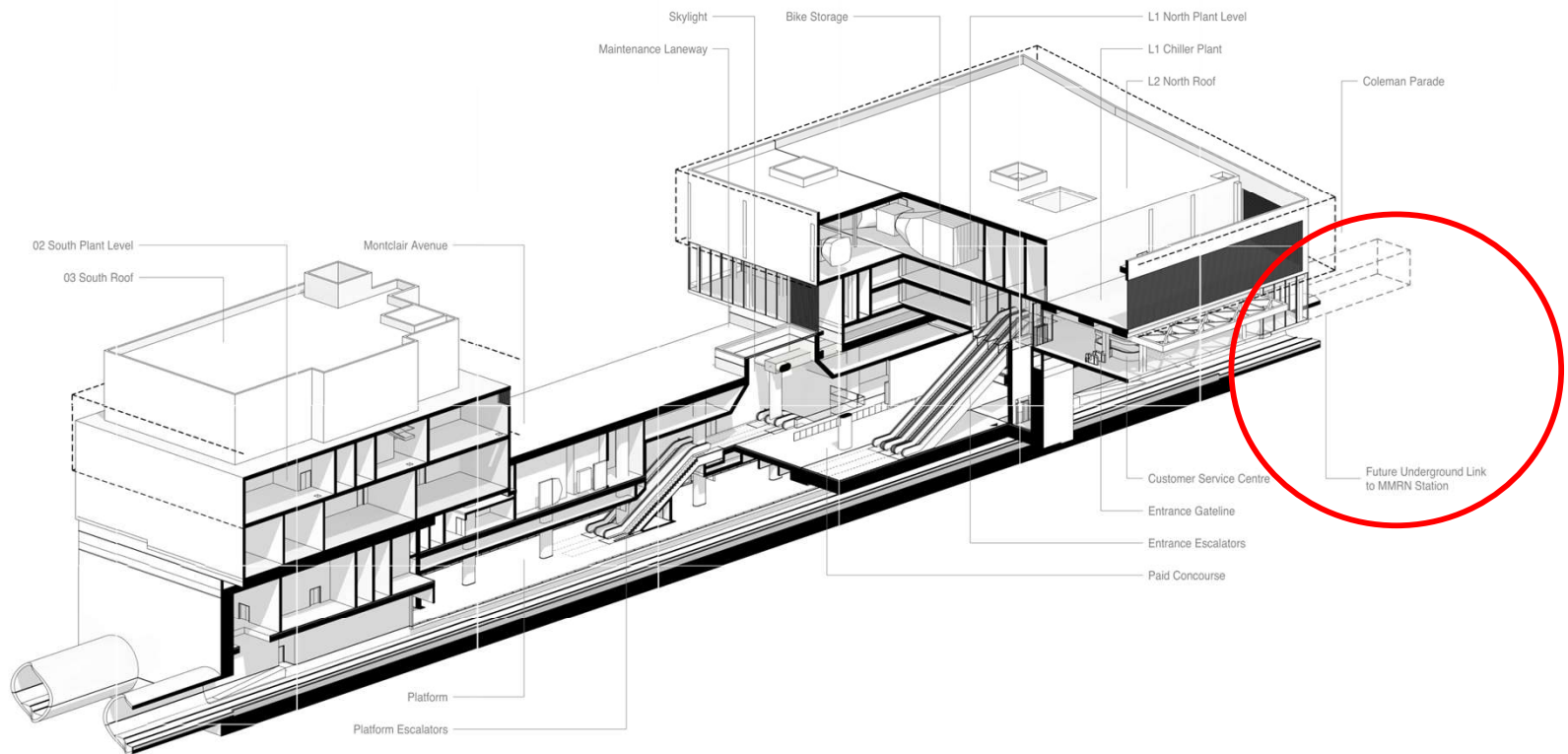
13 July 2022

# Stations not connected

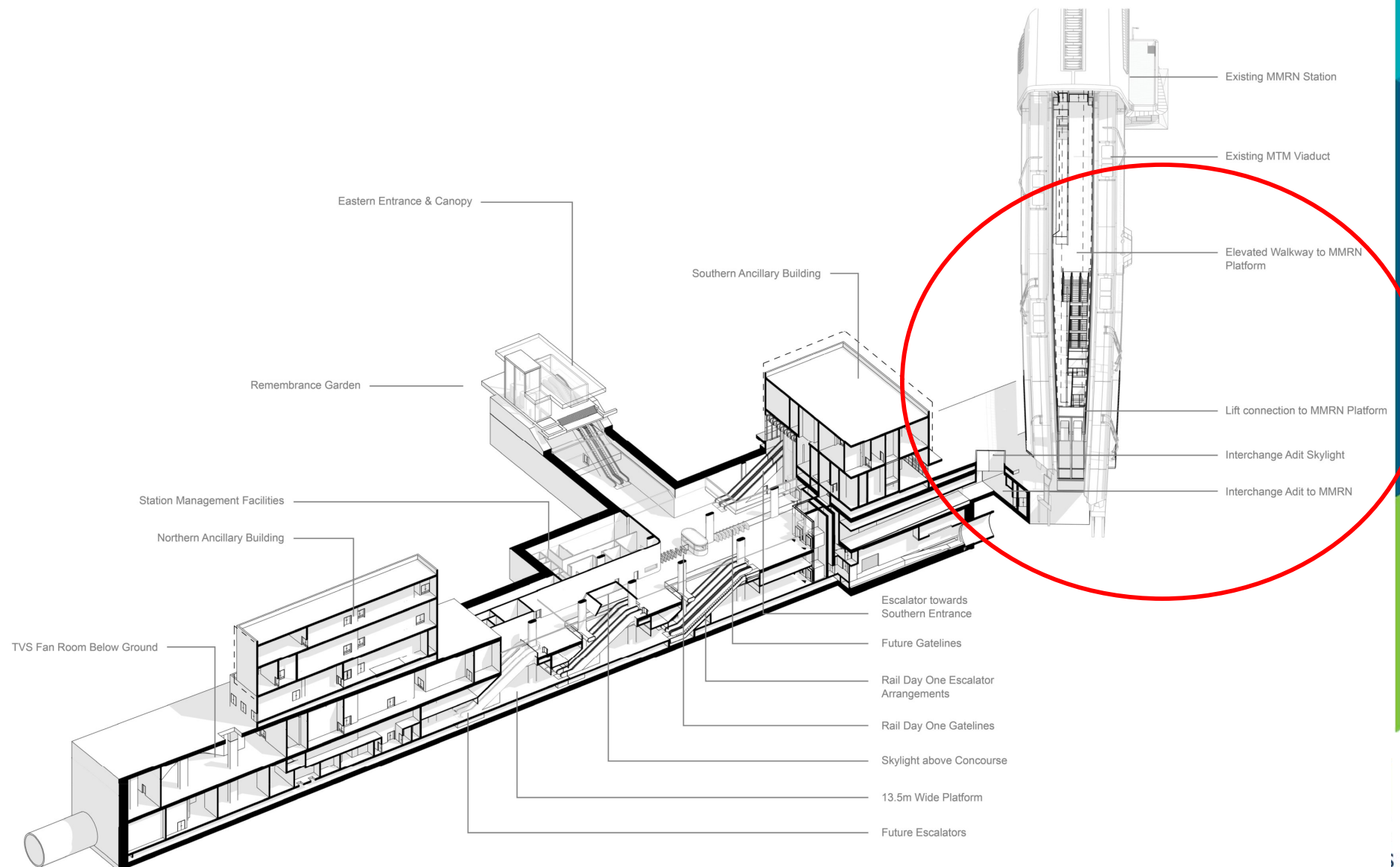


Figure 7.66 Pedestrian travel times within the interchange

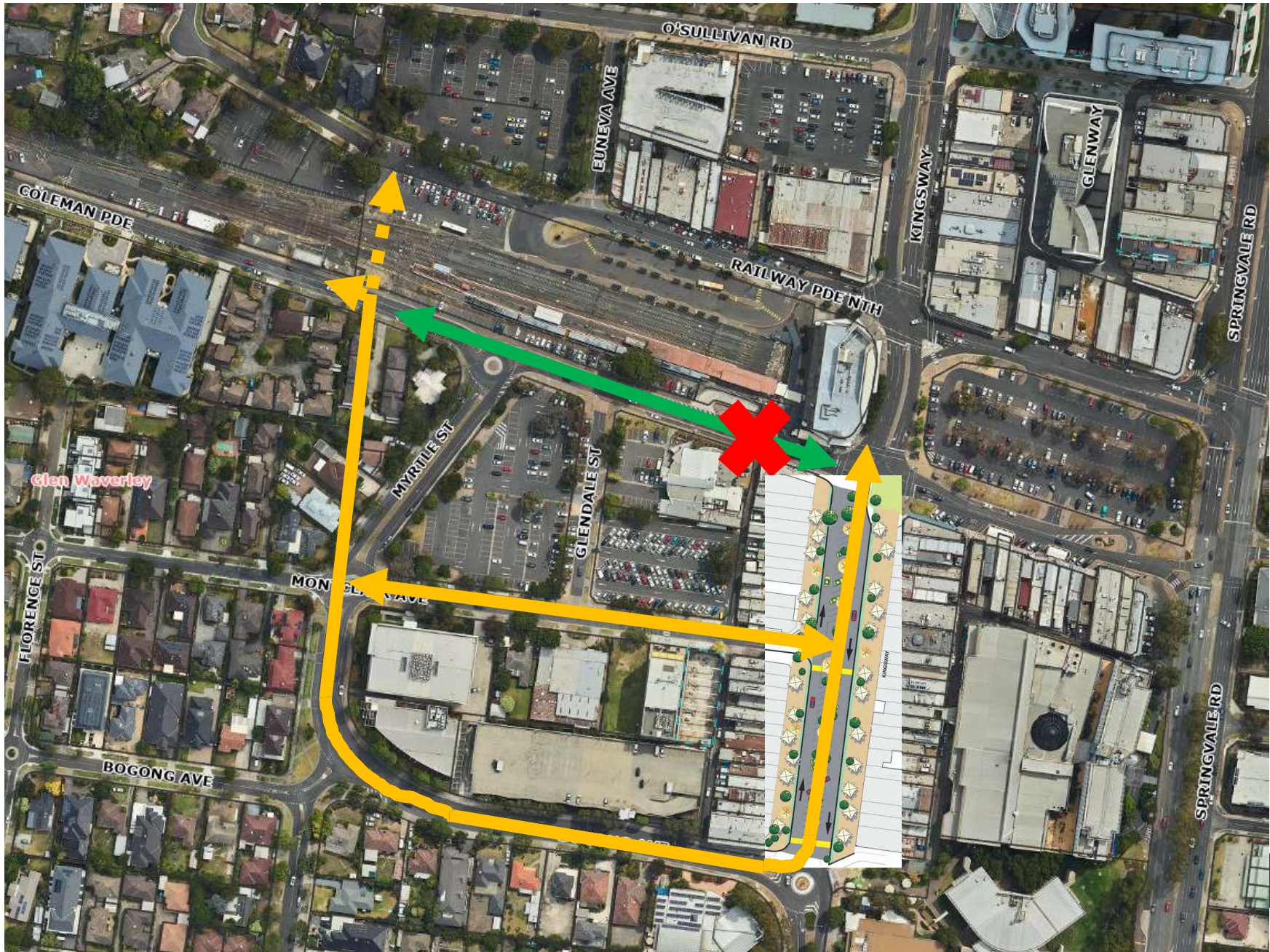
# Provision for future underground link



# They are at Clayton...



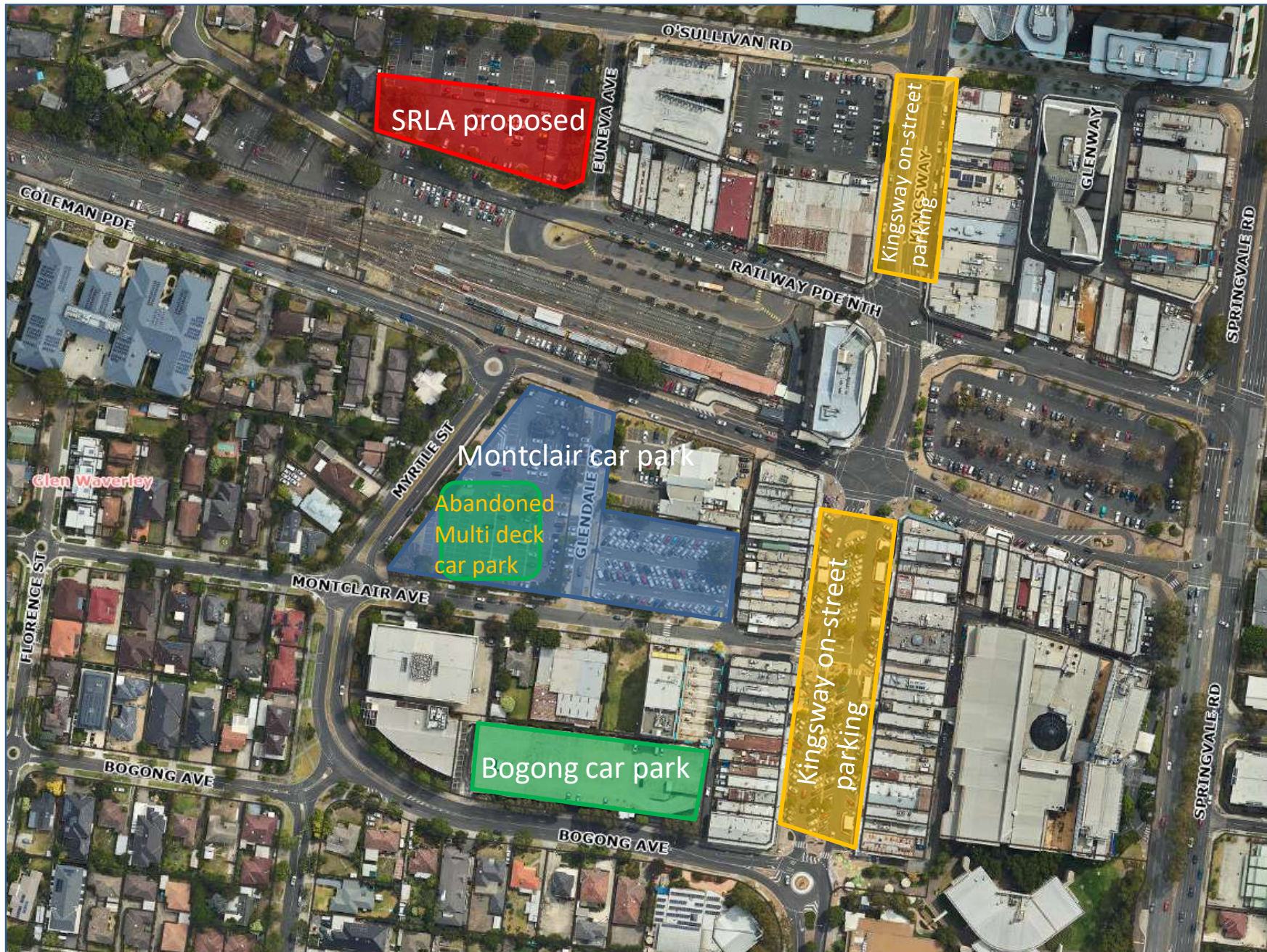
# Coleman Parade closure



# Optimum outcome?



# Replacement car parking



# Bogong car park extension

